

Supplier's Product Code :
 Product Added :
 Last Updated by Supplier :
 erudus id :

I000238
 12 March 2025
 12 March 2025
 797592c395d44f48b0fbdedeed1a5cf6



The information on the **Erudus System** has been supplied by the manufacturers of the products and, whilst the owners of the Erudus System take steps to ensure the information is regularly updated, they give no warranty and no guarantee that the information is accurate. Product information and ingredients may change, please always read product labels carefully in addition to using the information provided by Erudus One.

We do not accept liability for any inaccuracies or incorrect information contained on this site. Please visit <http://www.erudus.com/terms-and-conditions> for full terms and conditions.

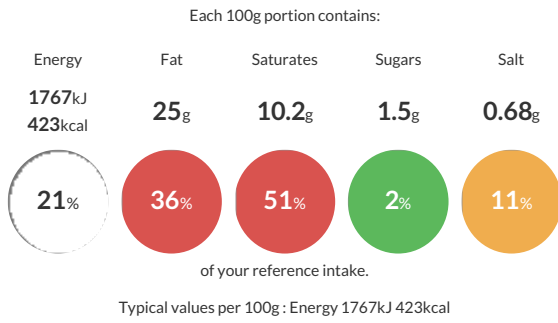
JUS ROL Shortcrust Pastry Block (4 x 1500g)

Short Product Name:
 Shortcrust Pastry

Frozen, uncooked Shortcrust Pastry blocks

Traded Unit GTIN: **15061056620057** Internal GTIN: **5061056620050** Supplier : **PA Ross Ltd** Suppliers Product Code : **I000238**

Reference Intake



Nutritional Information

Typical Values	Per 100g
Energy	1767kJ 423kCal
Carbohydrates	43.1g
of which sugars	1.5g
Fat	25g
of which saturates	10.2g
Fibre	1.3g
Protein	5.8g
Salt	0.68g

Allergy Information

Key: **Contains** **May Contain**

Contains Cereal/Gluten	Does Not Contain Milk	Does Not Contain Eggs	Does Not Contain Peanuts	Does Not Contain Nuts	Does Not Contain Crustaceans	Does Not Contain Mustard
Does Not Contain Fish	Does Not Contain Lupin	Does Not Contain Sesame	Does Not Contain Celery	Does Not Contain Soya	Does Not Contain Molluscs	Does Not Contain Sulphur Dioxide

Allergen Statement

For allergens, see ingredients in bold.

Ingredients

WHEAT flour, vegetable oils and fats (palm, rapeseed), water, sugar, salt, emulsifier (mono- and diglycerides of fatty acids), flour treatment agent (ascorbic acid).

Dietary Information

Key: **Suitable for**

Suitable for Vegetarian	Suitable for Vegan	May not be suitable for Kosher	May not be suitable for Halal	NO DATA for Coeliac
-------------------------	--------------------	--------------------------------	-------------------------------	---------------------