

The information on the [Erudus System](#) has been supplied by the manufacturers of the products and, whilst the owners of the Erudus System take steps to ensure the information is regularly updated, they give no warranty and no guarantee that the information is accurate. Product information and ingredients may change, please always read product labels carefully in addition to using the information provided by Erudus One.

We do not accept liability for any inaccuracies or incorrect information contained on this site. Please visit <http://www.erudus.com/terms-and-conditions> for full terms and conditions.

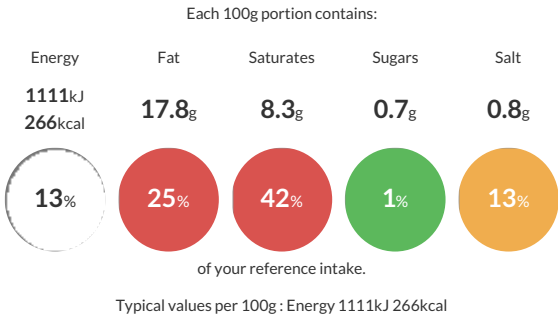
# Steak & Laines Ale Pie 275g

Short Product Name:  
Steak & Laines Ale Pie

Steak & Laines Ale Pie (12 x 275g)

Traded Unit GTIN: - Internal GTIN: Supplier: Bell House Foods Ltd Suppliers Product Code: LSA275

## Reference Intake





## Nutritional Information


Typical Values	Per 100g
Energy	1111kJ 266kCal
Carbohydrates	21.3g
of which sugars	0.7g
Fat	17.8g
of which saturates	8.3g
Fibre	0.8g
Protein	9.7g
Salt	0.8g

## Allergy Information

Key: Contains May Contain

  
Contains Cereal/Gluten

  
Does Not Contain Milk


  
Contains Eggs

  
Does Not Contain Peanuts


  
Does Not Contain Nuts


  
Does Not Contain Crustaceans


  
Does Not Contain Mustard

  
Does Not Contain Fish


  
Does Not Contain Lupin

  
Does Not Contain Sesame

  
Does Not Contain Celery

  
Does Not Contain Soya

  
Does Not Contain Molluscs

  
May Contain Sulphur Dioxide

## Dietary Information

Key: Suitable for

  
May not be suitable for Vegetarian

  
May not be suitable for Vegan

  
May not be suitable for Kosher

  
May not be suitable for Halal

  
May not be suitable for Coeliac

## Ingredients

Filling: Steak (40%), Laines Ale (4%), Onion, Maize Starch, Beef Stock (Beef Extract, Carrot, Tomato, Tapioca Starch,Wheat Flour **WHEAT**, Carmel Colour, Flavourings (contains **EGG**), Glucose Syrup, Salt, Yeast )Vegetable Oil Water, **EGG** Pepper, Salt.

Pastry: Wheat Flour (**WHEAT**, Calcium Carbonate, Iron, Niacin, Thiamin) Vegetable Shortening (Palm & Rapeseed Oils) Margarine (Vegetable Oil, Water, Salt Emulsifer (Mono & Diglycerides of fatty acids) Preservatives (Potassium Sorbete,Citric Acid) Colour (Annatto & Curcumin)Flavourings) Water, Salt.