

Supplier's Product Code :
Product Added :
Last Updated by Supplier :
erudus id :

1342 187657
17 October 2024
17 October 2024
7c6b8e44244e48298d3cc96426a77205



The information on the Erudus System has been supplied by the manufacturers of the products and, whilst the owners of the Erudus System take steps to ensure the information is regularly updated, they give no warranty and no guarantee that the information is accurate. Product information and ingredients may change, please always read product labels carefully in addition to using the information provided by Erudus One.

We do not accept liability for any inaccuracies or incorrect information contained on this site. Please visit <http://www.erudus.com/terms-and-conditions> for full terms and conditions.

1342 - Individual Chocolate Fondant Pudding (12)

Short Product Name:

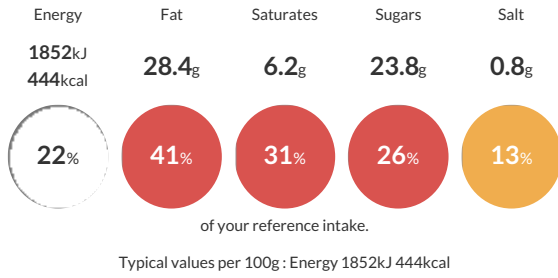
Chocolate Fondant Pudding

A traditional moist chocolate sponge pudding, centred with chocolate fondant sauce.

Traded Unit GTIN: 5060622441693 Internal GTIN: Supplier: Eatons Patisserie Suppliers Product Code: 1342 187657

Reference Intake

Each 100g portion contains:



Nutritional Information

Typical Values	Per 100g
Energy	1852kJ 444kCal
Carbohydrates	40g
of which sugars	23.8g
Fat	28.4g
of which saturates	6.2g
Fibre	2.1g
Protein	5.8g
Salt	0.8g

Allergy Information

Key: Contains May Contain



Dietary Information

Key: Suitable for



Ingredients

Chocolate Muffin Base (45%) [Sugar, WHEAT Flour (With Calcium, Iron, Niacin, Thiamin), Whole EGG Powder, Fat Reduced Cocoa Powder (4%), Modified Starch (Maize), Raising Agents (Disodium Diphosphate, Potassium Bicarbonate), Emulsifiers (E477, E481), Whey Solids (MILK), Salt, Vegetable Oils (Palm, Rapeseed), Stabiliser (Xanthan Gum), Flavouring], Rapeseed Oil, Water, Dark Chocolate (9%) [Cocoa Mass, Sugar, Cocoa Butter, Emulsifier (SOYA Lecithin), Natural Vanilla Flavouring], Cream (MILK).