

Supplier's Product Code :
 Product Added :
 Last Updated by Supplier :
 erudus id :

012323P
 29 February 2024
 01 March 2024
 7e086b05738f40558ae2ab8a7595cada



The information on the [Erudus System](#) has been supplied by the manufacturers of the products and, whilst the owners of the Erudus System take steps to ensure the information is regularly updated, they give no warranty and no guarantee that the information is accurate. Product information and ingredients may change, please always read product labels carefully in addition to using the information provided by Erudus One.

We do not accept liability for any inaccuracies or incorrect information contained on this site. Please visit <http://www.erudus.com/terms-and-conditions> for full terms and conditions.

Purple Pineapple Meat-Free Sweet Chilli Balls 1kg

Short Product Name:

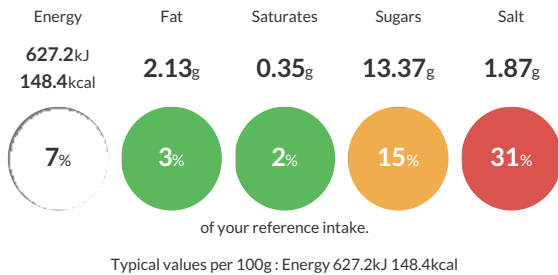
Meat-Free Sweet Chilli Balls

Meatless Meatballs in a Sweet Chilli Sauce

Traded Unit GTIN: Internal GTIN: Supplier: Suppliers Product Code: 012323P

Reference Intake

Each 100g portion contains:



Nutritional Information

Typical Values	Per 100g
Energy	627.2kJ 148.4kcal
Carbohydrates	20.25g
of which sugars	13.37g
Fat	2.13g
of which saturates	0.35g
Fibre	2.26g
Protein	11.69g
Salt	1.87g

Allergy Information

Key: Contains May Contain

Contains Cereal/Gluten	Does Not Contain Milk	Does Not Contain Eggs	Does Not Contain Peanuts	Does Not Contain Nuts	Does Not Contain Crustaceans	Does Not Contain Mustard
Does Not Contain Fish	Does Not Contain Lupin	Does Not Contain Sesame	Does Not Contain Celery	Does Not Contain Soya	Does Not Contain Molluscs	Contains Sulphur Dioxide

Dietary Information

Key: Suitable for

Suitable for Vegetarian	Suitable for Vegan	May not be suitable for Kosher	May not be suitable for Halal	NO DATA for Coeliac
-------------------------	--------------------	--------------------------------	-------------------------------	---------------------

Ingredients

Meatless Meatballs 40% Wheat WHEAT shreds, Water, Starch, Firming Agent Calcium Sulphate, Preservative Sodium Metabisulphite SULPHITES, Mushroom, Pea Protein, Rapeseed Oil, Onion, Potato Flake, Spices (Mace, Coriander, Black Pepper), Dextrose, Salt, Garlic Powder, Onion Powder, Yeast Extract, Chilli Sauce 30% Water, Sugar, Spirit Vinegar, Tomato Paste, Golden Syrup, Thickener E1442 Modified Starch, Salt, Red Pepper Flake, Onion Kibbled, Spice (Cayenne, Ginger), Garlic, Herb Coriander, Paprika E160c, Red Kidney Beans 20%, Water, Salt, Thai Sweet Chilli Sauce 10%, Glucose Syrup, Sugar, Water, White Wine Vinegar, Salt, Spirit Vinegar, Modified Maize Starch, Onion, Garlic Puree, Acidity Regulator Citric Acid, Red Chilli, Red Peppers, Stabilisers Sodium Alginate, Xanthan Gum, Chilli Powder, Crushed Chilli, Preservative Potassium Sorbital, Caramelised Sugar Syrup, Colour Paprika Extract.