

Supplier's Product Code :  
Product Added :  
Last Updated by Supplier :  
erudus id :

611498  
17 May 2021  
11 February 2022  
7e206f01eb634be6bec7f848c2b57cc0



The information on the Erudus System has been supplied by the manufacturers of the products and, whilst the owners of the Erudus System take steps to ensure the information is regularly updated, they give no warranty and no guarantee that the information is accurate. Product information and ingredients may change, please always read product labels carefully in addition to using the information provided by Erudus One.

We do not accept liability for any inaccuracies or incorrect information contained on this site. Please visit <http://www.erudus.com/terms-and-conditions> for full terms and conditions.

## CADBURY TWIRL CHOCOLATE BAR 48CA

**Warning!** This Product Specification complies with EU Food Information Regulation No. 1169/2011 (FIR) however we are still awaiting further product attributes to complete the full Erudus specification.

Short Product Name:

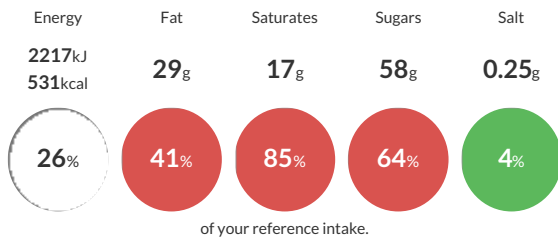
CADBURY TWIRL CHOCOLATE BAR

CADBURY TWIRL CHOCOLATE BAR

Traded Unit GTIN: 5000201191694 Internal GTIN: 5000201499776 Supplier : Mondelez UK Ltd Suppliers Product Code : 611498

### Reference Intake

Each 100g portion contains:



Typical values per 100g : Energy 2217kJ 531kcal

### Nutritional Information

Typical Values	Per 100g
Energy	2217kJ 531kCal
Carbohydrates	58g
of which sugars	58g
Fat	29g
of which saturates	17g
Fibre	2.3g
Protein	7g
Salt	0.25g

### Allergy Information

Key: Contains May Contain



### Dietary Information

Key: Suitable for



### Ingredients

Ingredients: MILK, sugar, cocoa butter, cocoa mass, whey powder (from MILK), vegetable fats (palm, shea), emulsifiers (E442, E476),flavourings.