

Supplier's Product Code :  
Product Added :  
Last Updated by Supplier :  
erudus id :

4015891  
27 February 2025  
27 February 2025  
8173d524aea54f99b3e3c2dd245fddfd



The information on the Erudus System has been supplied by the manufacturers of the products and, whilst the owners of the Erudus System take steps to ensure the information is regularly updated, they give no warranty and no guarantee that the information is accurate. Product information and ingredients may change, please always read product labels carefully in addition to using the information provided by Erudus One.

We do not accept liability for any inaccuracies or incorrect information contained on this site. Please visit <http://www.erudus.com/terms-and-conditions> for full terms and conditions.

## CADBURY 36G WISPA SGL 48CA

**Warning!** This Product Specification complies with EU Food Information Regulation No. 1169/2011 (FIR) however we are still awaiting further product attributes to complete the full Erudus specification.

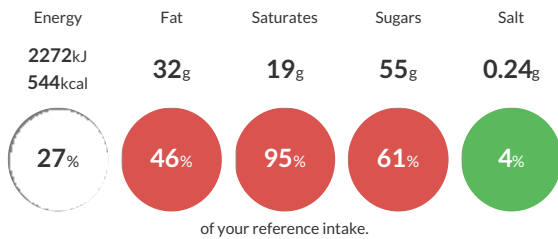
Short Product Name:  
CADBURY 36G WISPA SGL

Textured milk chocolate bar.

Traded Unit GTIN: **07622210001788** Internal GTIN: **07622210470126** Supplier : **Mondelez UK Ltd** Suppliers Product Code : **4015891**

### Reference Intake

Each 100g portion contains:



Typical values per 100g : Energy 2272kJ 544kcal

### Nutritional Information

Typical Values	Per 100g
Energy	2272kJ 544kCal
Carbohydrates	56g
of which sugars	55g
Fat	32g
of which saturates	19g
Fibre	2.2g
Protein	6.6g
Salt	0.24g

### Allergy Information

Key: **Contains** **May Contain**



Allergen Statement  
MAY CONTAINS NUTS.

### Ingredients

Ingredients: MILK, sugar, cocoa butter, cocoa mass, vegetable fats (palm, shea), whey powder (from MILK), emulsifier (E442), flavourings.

### Dietary Information

Key: **Suitable for**

