

The information on the [Erudus System](#) has been supplied by the manufacturers of the products and, whilst the owners of the Erudus System take steps to ensure the information is regularly updated, they give no warranty and no guarantee that the information is accurate. Product information and ingredients may change, please always read product labels carefully in addition to using the information provided by Erudus One.

We do not accept liability for any inaccuracies or incorrect information contained on this site. Please visit <http://www.erudus.com/terms-and-conditions> for full terms and conditions.

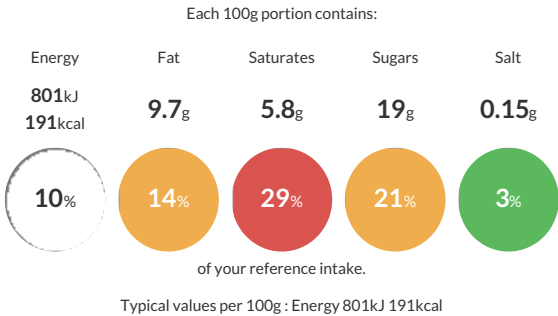
Marshfield Farm Mint Choc Chip Ice Cream 125ml

Short Product Name:
Marshfield Farm Mint Choc Chip Ice Cream

Mint flavoured Dairy Ice Cream made with chocolate chips.

Traded Unit GTIN: 5060012791117 Internal GTIN: 5060012790356 Supplier : Marshfield Farm Ice Cream Ltd. Suppliers Product Code : MPCC100

Reference Intake



Nutritional Information

Typical Values	Per 100g
Energy	801kJ 191kCal
Carbohydrates	22g
of which sugars	19g
Fat	9.7g
of which saturates	5.8g
Fibre	-g
Protein	3.6g
Salt	0.15g

Allergy Information

Key: Contains May Contain

Gluten < 20ppm
Does Not Contain Cereal/Gluten

Contains Milk

Does Not Contain Eggs

May Contain Peanuts

May Contain Nuts

Does Not Contain Crustaceans

Does Not Contain Mustard

Does Not Contain Fish

Does Not Contain Lupin

Does Not Contain Sesame

Does Not Contain Celery

Contains Soya

Does Not Contain Molluscs

Does Not Contain Sulphur Dioxide

Gluten Claim
Gluten content is less than 20ppm.

Allergen Statement
Contains milk and soya
Our suppliers cannot guarantee that their ingredients are free from traces of nuts

Ingredients

Fresh MILK (54%), double cream (MILK)(19%), chocolate flakes (8%) [sugar, cocoa mass, cocoa butter, emulsifer (SOYA lecithin), natural vanilla flavouring], sugar, dextrose, MILK solids, emulsifier (mono and di-glycerides of fatty acids), stabilisers (guar gum, locust bean gum, carrageenan), glycerine, natural peppermint flavouring, natural colours (chlorophyllin, curcumin).

Dietary Information

Key: Suitable for

Suitable for Vegetarian

May not be suitable for Vegan

May not be suitable for Kosher

May not be suitable for Halal

Suitable for Coeliac