

Supplier's Product Code :
Product Added :
Last Updated by Supplier :
erudus id :

BFL3749
13 April 2022
05 April 2024
81cb26d0dfb640ba9f0da49d16fad46f



The information on the [Erudus System](#) has been supplied by the manufacturers of the products and, whilst the owners of the Erudus System take steps to ensure the information is regularly updated, they give no warranty and no guarantee that the information is accurate. Product information and ingredients may change, please always read product labels carefully in addition to using the information provided by Erudus One.

We do not accept liability for any inaccuracies or incorrect information contained on this site. Please visit <http://www.erudus.com/terms-and-conditions> for full terms and conditions.

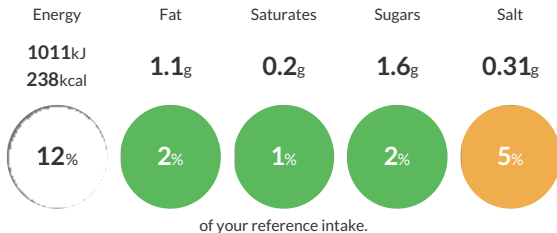
Wholemeal Pitta Bread 60g (1 x 72)

Fully baked, oval-shaped, wholemeal pitta bread. Packed 12 x 6. Suitable for vegetarians and vegans. (1 x 72)

Traded Unit GTIN: **5022558001310** Internal GTIN: Supplier: **Central Foods Group Ltd** Suppliers Product Code: **BFL3749**

Reference Intake

Each 100g portion contains:



Typical values per 100g : Energy 1011kJ 238kcal

Nutritional Information

Typical Values	Per 100g
Energy	1011kJ 238kCal
Carbohydrates	47.2g
of which sugars	1.6g
Fat	1.1g
of which saturates	0.2g
Fibre	4.5g
Protein	7.8g
Salt	0.31g

Allergy Information

Key: **Contains** **May Contain**



Allergen Statement

For allergens, including cereals containing gluten, see ingredients in **CAPITALS**.

Ingredients

Wholemeal **WHEAT** Flour, Fortified **WHEAT** Flour (Calcium Carbonate, Niacin, Iron, Thiamin), Water, Yeast, Sugar, Salt, Preservative (Calcium Propionate).

Dietary Information

Key: **Suitable for**

