

Supplier's Product Code :
 Product Added :
 Last Updated by Supplier :
 erudus id :

F00380
 21 November 2006
 20 February 2023
 866a7507b9fd422d943a848f72c23cb1



The information on the **Erudus System** has been supplied by the manufacturers of the products and, whilst the owners of the Erudus System take steps to ensure the information is regularly updated, they give no warranty and no guarantee that the information is accurate. Product information and ingredients may change, please always read product labels carefully in addition to using the information provided by Erudus One.

We do not accept liability for any inaccuracies or incorrect information contained on this site. Please visit <http://www.erudus.com/terms-and-conditions> for full terms and conditions.

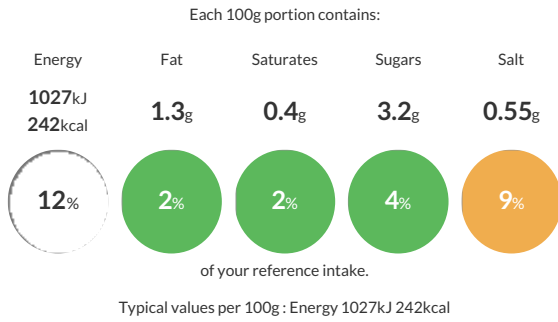
Fletchers Medium Sliced White Bread 8 x 800g e

Short Product Name:

A medium sliced soft white loaf, 21 slices and 2 crusts per loaf. Ideal for toast or sandwiches

Traded Unit GTIN: **05010066001113** Internal GTIN: Supplier : **Kara Foodservice (Fletchers)** Suppliers Product Code : **F00380**

Reference Intake

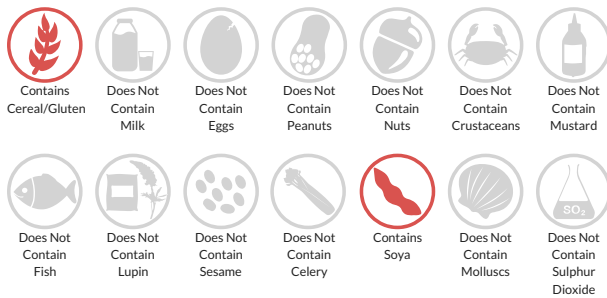


Nutritional Information

Typical Values	Per 100g
Energy	1027kJ 242kCal
Carbohydrates	48.1g
of which sugars	3.2g
Fat	1.3g
of which saturates	0.4g
Fibre	2.7g
Protein	8.2g
Salt	0.55g

Allergy Information

Key: **Contains** **May Contain**



Allergen Statement

For allergens, including cereals containing gluten, see ingredients in **CAPITALS**.

Ingredients

Wheat Flour (**WHEAT** Flour, Calcium Carbonate, Niacin, Iron, Thiamin), Water, Palm Oil, Salt, Yeast, Emulsifier (E472e), Spirit Vinegar, **SOYA** Flour, Preservative (E282), Flour Treatment Agent (E300).

Dietary Information

Key: **Suitable for**

