

Supplier's Product Code :
Product Added :
Last Updated by Supplier :
erudus id :

070211
06 February 2024
06 February 2024
86c87286f35846609e690f8c8a159fcd



The information on the Erudus System has been supplied by the manufacturers of the products and, whilst the owners of the Erudus System take steps to ensure the information is regularly updated, they give no warranty and no guarantee that the information is accurate. Product information and ingredients may change, please always read product labels carefully in addition to using the information provided by Erudus One.

We do not accept liability for any inaccuracies or incorrect information contained on this site. Please visit <http://www.erudus.com/terms-and-conditions> for full terms and conditions.

CHOCOLATE CAKE (1 x 14 ptn)

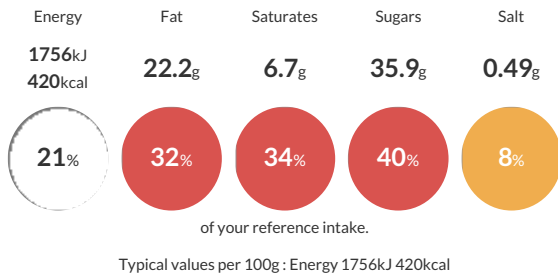
Short Product Name:
Chocolate Cake

A moist sponge filled and topped with chocolate icing and sprinkled with white and milk chocolate shavings.

Traded Unit GTIN: 5060044070211 Internal GTIN: Supplier: The Handmade Cake Co. Suppliers Product Code: 070211

Reference Intake

Each 100g portion contains:



Nutritional Information

Typical Values	Per 100g
Energy	1756kJ 420kCal
Carbohydrates	48.7g
of which sugars	35.9g
Fat	22.2g
of which saturates	6.7g
Fibre	2.7g
Protein	5g
Salt	0.49g

Allergy Information

Key: Contains May Contain



Dietary Information

Key: Suitable for



Allergen Statement

For allergens, including cereals containing gluten, see ingredients in **BOLD**. This product may contain traces of nuts as it has been made in a bakery that uses nut ingredients.

Ingredients

Chocolate Icing (23%) [Icing Sugar, Salted Butter [Butter (MILK), Salt], Fat Reduced Cocoa Powder (9%), Water], Sugar, WHEAT Flour (with Calcium Carbonate, Niacin, Iron, Thiamin), Pasteurised Free Range EGG, Rapeseed Oil, Water, Fat Reduced Cocoa Powder (3.6%), Skimmed MILK Powder, Milk Chocolate Flakes (0.8%) [Sugar, Cocoa Mass, Cocoa Butter, Whole MILK Powder, Skimmed MILK Powder, Emulsifier (Lecithins (SOYA)), Natural Vanilla Flavouring], White Chocolate Flakes (0.8%) [Sugar, Whole MILK Powder, Cocoa Butter, Emulsifier (Lecithins (SOYA)), Natural Vanilla Flavouring], Baking Powder [Raising Agents (E575, E500(ii), E336(i)), Maize Starch].