

Supplier's Product Code :
Product Added :
Last Updated by Supplier :
erudus id :

15267 (YAM016)
20 January 2025
20 January 2025
875ed51198bc4d259136686d4778e877



The information on the **Erudus System** has been supplied by the manufacturers of the products and, whilst the owners of the Erudus System take steps to ensure the information is regularly updated, they give no warranty and no guarantee that the information is accurate. Product information and ingredients may change, please always read product labels carefully in addition to using the information provided by Erudus One.

We do not accept liability for any inaccuracies or incorrect information contained on this site. Please visit <http://www.erudus.com/terms-and-conditions> for full terms and conditions.

YAMAS! Feta, 12x200g

Short Product Name:

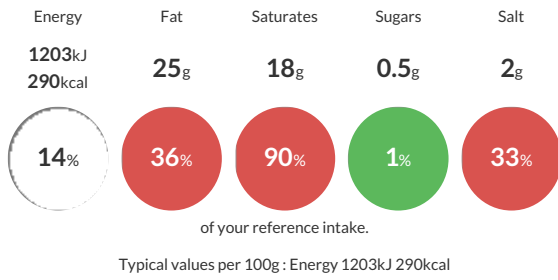
15267 (YAM016) YAMAS! Feta, 12x200g

PDO Greek Feta made from Pasteurised Sheep & Goat's MILK

Traded Unit GTIN: **05038961001212** Internal GTIN: **5038961001205** Supplier: **Futura Foods UK Ltd** Suppliers Product Code: **15267 (YAM016)**

Reference Intake

Each 100g portion contains:



Nutritional Information

Typical Values	Per 100g
Energy	1203kJ 290kCal
Carbohydrates	1g
of which sugars	0.5g
Fat	25g
of which saturates	18g
Fibre	-g
Protein	16g
Salt	2g

Allergy Information

Key: **Contains** **May Contain**



Gluten Claim

Gluten content is less than 20ppm.

Allergen Statement

contains Pasteurised Sheep & Goat's MILK

Ingredients

Feta Cheese (MILK)

Dietary Information

Key: **Suitable for**

