

Supplier's Product Code :
Product Added :
Last Updated by Supplier :
erudus id :

64536 (FBGF16)
16 January 2024
17 January 2024
8822bdf272e34fd9aabc6d1ee25f341b



The information on the Erudus System has been supplied by the manufacturers of the products and, whilst the owners of the Erudus System take steps to ensure the information is regularly updated, they give no warranty and no guarantee that the information is accurate. Product information and ingredients may change, please always read product labels carefully in addition to using the information provided by Erudus One.

We do not accept liability for any inaccuracies or incorrect information contained on this site. Please visit <http://www.erudus.com/terms-and-conditions> for full terms and conditions.

ASC Gilthead Bream fillet, skin on, scaled (6 x 140-170g)

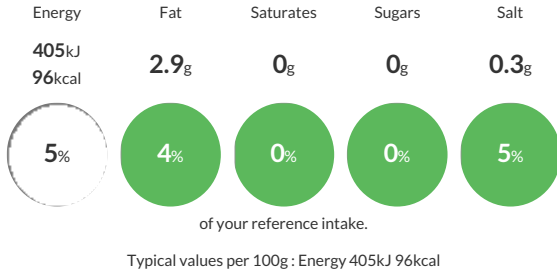
Short Product Name:
ASC Gilthead bream

ASC Gilthead Bream fillet, skin on, scaled (6 x 140-170g).

Traded Unit GTIN: Internal GTIN: Supplier: M&J Seafood Suppliers Product Code: 64536 (FBGF16)

Reference Intake

Each 100g portion contains:



Nutritional Information

Typical Values	Per 100g
Energy	405kJ 96kCal
Carbohydrates	0g
of which sugars	0g
Fat	2.9g
of which saturates	0g
Fibre	0g
Protein	17.5g
Salt	0.3g

Allergy Information

Key: Contains May Contain



Dietary Information

Key: Suitable for



Ingredients

Gilthead Seabream (*Sparus aurata*) (FISH).