

Supplier's Product Code :
Product Added :
Last Updated by Supplier :
erudus id :

10000214
11 June 2024
11 June 2024
89e6e5110ffe48e3b65153c659926072



The information on the **Erudus System** has been supplied by the manufacturers of the products and, whilst the owners of the Erudus System take steps to ensure the information is regularly updated, they give no warranty and no guarantee that the information is accurate. Product information and ingredients may change, please always read product labels carefully in addition to using the information provided by Erudus One.

We do not accept liability for any inaccuracies or incorrect information contained on this site. Please visit <http://www.erudus.com/terms-and-conditions> for full terms and conditions.

Demi-Glace 12 x 1L

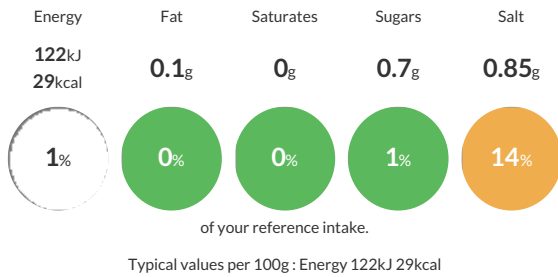
Short Product Name:
Demi-Glace

A heat treated rich brown sauce made with a blend of vegetable and meat stocks and a hint of tomato.

Traded Unit GTIN: **05017506451163** Internal GTIN: **5017506701169** Supplier : **Macphie Ltd** Suppliers Product Code: **10000214**

Reference Intake

Each 100g portion contains:



Nutritional Information

Typical Values	Per 100g
Energy	122kJ 29kCal
Carbohydrates	6.2g
of which sugars	0.7g
Fat	0.1g
of which saturates	0g
Fibre	0.07g
Protein	0.6g
Salt	0.85g

Allergy Information

Key: **Contains** **May Contain**



Dietary Information

Key: **Suitable for**



Allergen Statement

Contains: **CELERY** and **SOYA**.

Ingredients

Reconstituted Vegetable, Chicken and Beef Stock (92%) [Water, Flavouring (**SOYA**), Salt, Yeast Extract, Maltodextrin, Sugar, Hydrolysed **SOYA** Protein, Vegetable Extract (Dried Onion, Dried Celeriac (**CELERY**), Dried Carrot, Dried Leek, Dried **CELERY**), Chicken Meat, Tomato Powder, Beef Extract, Vegetable Oil (Rapeseed), White Pepper, Dried Herb], Modified Starch, Tomato Puree, Colour (Ammonia Caramel), Flavouring.