

Supplier's Product Code :
 Product Added :
 Last Updated by Supplier :
 erudus id :

136192
 23 January 2024
 23 January 2024
 8af8bf9752ed40c089d17c24435fa4b5



The information on the Erudus System has been supplied by the manufacturers of the products and, whilst the owners of the Erudus System take steps to ensure the information is regularly updated, they give no warranty and no guarantee that the information is accurate. Product information and ingredients may change, please always read product labels carefully in addition to using the information provided by Erudus One.

We do not accept liability for any inaccuracies or incorrect information contained on this site. Please visit <http://www.erudus.com/terms-and-conditions> for full terms and conditions.

Large Mascarpone Filled Chocolate Topped Choux Bun

Short Product Name:

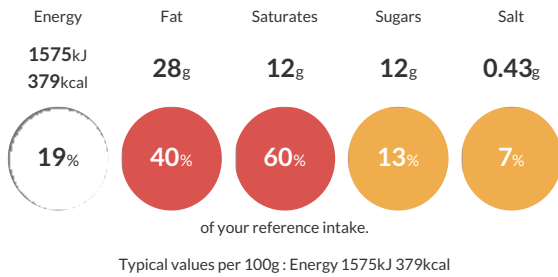
Sysco Classic Large Mascarpone Filled Chocolate Topped Choux Bun

Crisp choux pastry bun filled with a mascarpone cream filling & topped with a dark chocolate topping. Individual;12 portions

Traded Unit GTIN: Internal GTIN: Supplier: **Brake Bros Ltd** Suppliers Product Code: **136192**

Reference Intake

Each 100g portion contains:



Nutritional Information

Typical Values	Per 100g
Energy	1575kJ 379kCal
Carbohydrates	25g
of which sugars	12g
Fat	28g
of which saturates	12g
Fibre	1.4g
Protein	5.6g
Salt	0.43g

Allergy Information

Key: Contains May Contain

Contains Cereal/Gluten	Contains Milk	Contains Eggs	Does Not Contain Peanuts	May Contain Nuts	Does Not Contain Crustaceans	Does Not Contain Mustard
Does Not Contain Fish	Does Not Contain Lupin	Does Not Contain Sesame	Does Not Contain Celery	Contains Soya	Does Not Contain Molluscs	Does Not Contain Sulphur Dioxide

Dietary Information

Key: Suitable for

Suitable for Vegetarian	May not be suitable for Vegan	May not be suitable for Kosher	May not be suitable for Halal	NO DATA for Coeliac
-------------------------	-------------------------------	--------------------------------	-------------------------------	---------------------

Ingredients

Whipping Cream (Milk), Water, Dark Chocolate (15%) (Sugar, Cocoa Mass, Cocoa Butter, Emulsifier (Soya Lecithin), Flavouring), Egg, Single Cream (Milk), Wheat Flour (Wheat Flour, Calcium Carbonate, Iron, Niacin, Thiamin), Icing Sugar, Invert Sugar Syrup, Shortening (Palm Oil, Rapeseed Oil), Mascarpone (3.5%) (Cream (Milk), Milk Protein Concentrate, Acidity Regulator (Citric Acid)), Margarine (Palm Oil, Rapeseed Oil, Water, Flavouring), Rapeseed Oil, Sugar, Flavouring, Modified Maize Starch, Modified Potato Starch, Salt.