

The information on the [Erudus System](#) has been supplied by the manufacturers of the products and, whilst the owners of the Erudus System take steps to ensure the information is regularly updated, they give no warranty and no guarantee that the information is accurate. Product information and ingredients may change, please always read product labels carefully in addition to using the information provided by Erudus One.

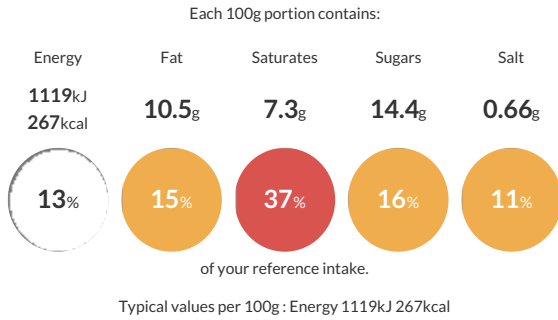
We do not accept liability for any inaccuracies or incorrect information contained on this site. Please visit <http://www.erudus.com/terms-and-conditions> for full terms and conditions.

Cranberry & Brie Wonton 18g x 50

Sweet cranberries and creamy brie cheese in a crisp pastry pouch Suitable for Vegetarians

Traded Unit GTIN: [5060058030379](#) Internal GTIN: Supplier: [Scheff Foods Ltd](#) Suppliers Product Code: [CBW18](#)

Reference Intake



Nutritional Information

Typical Values	Per 100g
Energy	1119kJ 267kCal
Carbohydrates	37.9g
of which sugars	14.4g
Fat	10.5g
of which saturates	7.3g
Fibre	0.9g
Protein	5.8g
Salt	0.66g

Allergy Information

Key: Contains May Contain

Contains Cereal/Gluten	Contains Milk	Does Not Contain Eggs	Does Not Contain Peanuts	May Contain Nuts	Does Not Contain Crustaceans	Does Not Contain Mustard
Does Not Contain Fish	Does Not Contain Lupin	Does Not Contain Sesame	Does Not Contain Celery	Does Not Contain Soya	Does Not Contain Molluscs	Does Not Contain Sulphur Dioxide

Dietary Information

Key: Suitable for

Suitable for Vegetarian	May not be suitable for Vegan	May not be suitable for Kosher	May not be suitable for Halal	May not be suitable for Coeliac
-------------------------	-------------------------------	--------------------------------	-------------------------------	---------------------------------

Ingredients

Cranberry Sauce (33%) (Contains Cranberries, Glucose-Fructose Syrup, Water, Sugar), Brie Cheese [MILK] (31%), Pastry (Contains WHEAT Flour, Water, Coconut Oil, Salt), Fortified WHEAT Flour (Contains Calcium Carbonate, Iron, Niacin, Thiamin), Modified Maize Starch E1422