

The information on the Erudus System has been supplied by the manufacturers of the products and, whilst the owners of the Erudus System take steps to ensure the information is regularly updated, they give no warranty and no guarantee that the information is accurate. Product information and ingredients may change, please always read product labels carefully in addition to using the information provided by Erudus One.

We do not accept liability for any inaccuracies or incorrect information contained on this site. Please visit <http://www.erudus.com/terms-and-conditions> for full terms and conditions.

## JimJams Nut Free, No Added Sugar Chocolate Spread - 1kg

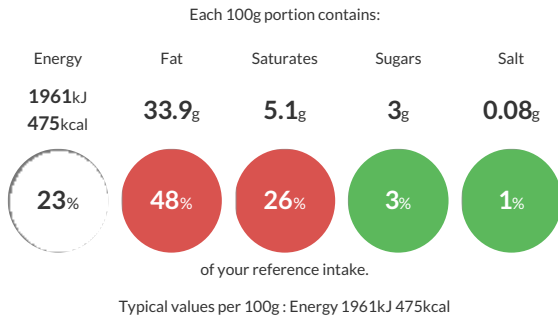
Short Product Name:

JimJams Nut Free, No Added Sugar Chocolate Spread - 1kg

JimJams Chocolate Spread is 83% less sugar than all other brands on the market. The natural sweetener we use does not promote tooth decay, has less effect on blood glucose levels and contains less calories than sugar. It has also just been awarded a two star Great Taste Award from the Guild of Fine Food. This spread is also very versatile and can be used as an ingredient in food to make anything from simple 'Better for you' Hot Chocolate or 'Lower Sugar' Chocolate Desserts.

Traded Unit GTIN: 15060376791010 Internal GTIN: 5060376791013 Supplier: JimJams Spreads Ltd Suppliers Product Code: JJ\_NSHF1KG

### Reference Intake



### Nutritional Information

Typical Values	Per 100g
Energy	1961kJ 475kCal
Carbohydrates	50g
of which sugars	3g
Fat	33.9g
of which saturates	5.1g
Fibre	4.6g
Protein	8.6g
Salt	0.08g

### Allergy Information

Key: Contains May Contain

Does Not Contain Cereal/Gluten	Contains Milk	Does Not Contain Eggs	Does Not Contain Peanuts	Does Not Contain Nuts	Does Not Contain Crustaceans	Does Not Contain Mustard
Does Not Contain Fish	Does Not Contain Lupin	Does Not Contain Sesame	Does Not Contain Celery	Does Not Contain Soya	Does Not Contain Molluscs	Does Not Contain Sulphur Dioxide

#### Allergen Statement

**ALLERGEN INFORMATION:** For allergens see ingredients in **CAPITALS**

### Ingredients

Plant Based Sweetener (Maltitol), Vegetable Oil (Rapeseed), Whey Powder (from **MILK**), Reduced Fat Cocoa Powder, Cocoa Fibre, Palm Oil, Skimmed **MILK** Powder, Emulsifier (Lecithins), Vanilla Extract, Natural Flavouring.

### Dietary Information

Key: Suitable for

Suitable for Vegetarian	May not be suitable for Vegan	May not be suitable for Kosher	May not be suitable for Halal	May not be suitable for Coeliac
-------------------------	-------------------------------	--------------------------------	-------------------------------	---------------------------------