

Supplier's Product Code :
Product Added :
Last Updated by Supplier :
erudus id :

FP.STRA1
09 July 2015
25 January 2023
8fe4b2efade942df9806525541ac4d4b



The information on the Erudus System has been supplied by the manufacturers of the products and, whilst the owners of the Erudus System take steps to ensure the information is regularly updated, they give no warranty and no guarantee that the information is accurate. Product information and ingredients may change, please always read product labels carefully in addition to using the information provided by Erudus One.

We do not accept liability for any inaccuracies or incorrect information contained on this site. Please visit <http://www.erudus.com/terms-and-conditions> for full terms and conditions.

350500-40 1kg Strawberry Fruit Puree - Léonce Blanc

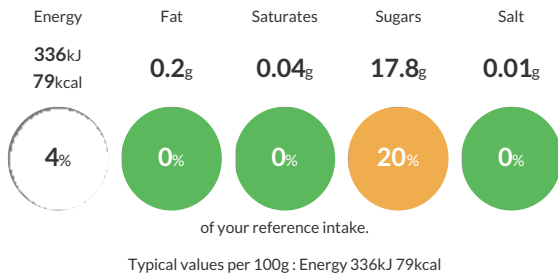
Short Product Name:
Strawberry Fruit Puree

Léonce Blanc - 350500-40 1kg Strawberry Fruit Puree FP.STRA1

Traded Unit GTIN: **3760174982652** Internal GTIN: **3760174982669** Supplier: **HB Ingredients** Suppliers Product Code: **FP.STRA1**

Reference Intake

Each 100g portion contains:



Nutritional Information

Typical Values	Per 100g
Energy	336kJ 79kCal
Carbohydrates	17.9g
of which sugars	17.8g
Fat	0.2g
of which saturates	0.04g
Fibre	1.6g
Protein	0.6g
Salt	0.01g

Allergy Information

Key: **Contains** **May Contain**



Dietary Information

Key: **Suitable for**



Ingredients

Strawberry 85,0%; sugar; natural flavouring; purple carrot concentrate juice.