

Supplier's Product Code :
 Product Added :
 Last Updated by Supplier :
 erudus id :

ROCK4x5
 07 June 2024
 07 June 2024
 8fed12eac2bd4660a1ef7e4af8f84d7f



The information on the Erudus System has been supplied by the manufacturers of the products and, whilst the owners of the Erudus System take steps to ensure the information is regularly updated, they give no warranty and no guarantee that the information is accurate. Product information and ingredients may change, please always read product labels carefully in addition to using the information provided by Erudus One.

We do not accept liability for any inaccuracies or incorrect information contained on this site. Please visit <http://www.erudus.com/terms-and-conditions> for full terms and conditions.

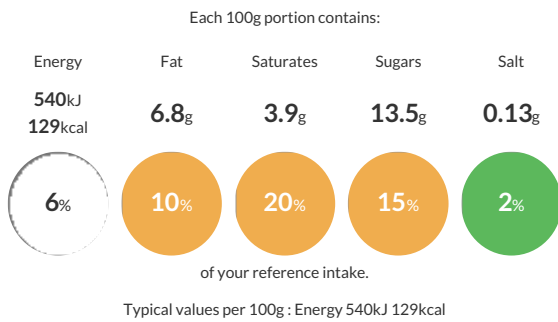
Rocky Road : 4 x 5 litre

Short Product Name:
 Rocky Road Ice Cream

Rocky Road Ice Cream - A wave of rich chocolate through a natural creamy ice cream, combined with pecan nuts, crisp toffee pieces and real chocolate chunks.

Traded Unit GTIN: 5060016671880 Internal GTIN: 5060016671873 Supplier: Yorvale Ltd Suppliers Product Code: ROCK4x5

Reference Intake



Nutritional Information

Typical Values	Per 100g
Energy	540kJ 129kCal
Carbohydrates	15.1g
of which sugars	13.5g
Fat	6.8g
of which saturates	3.9g
Fibre	0.2g
Protein	2.5g
Salt	0.13g

Allergy Information

Key: Contains May Contain



Dietary Information

Key: Suitable for



Allergen Statement

Made in a factory that produces nut product.

Ingredients

MILK, Double Cream (MILK), Sugar, Chocolate Sauce (8.3%)(Water, Sugar, Glucose Syrup, Sweetened Condensed Skimmed MILK, Salted Butter (MILK), Cocoa Butter, Dark Chocolate (Cocoa Mass, Sugar, Cocoa Butter, Emulsifier: SOYA Lecithin, Natural Vanilla Flavouring), Stabiliser: Modified Waxy Maize Starch), Skimmed MILK Powder, Glucose Syrup, Toffee Pieces (1.6%)(Sugar, Glucose Syrup, Brown Sugar (Sugar, Cane Molasses), Non-Hydrogenated Vegetable Fat SG (Shea Oil, Palm Oil, Emulsifier: SOYA Lecithin), Salt, Butter (MILK) Water, Palm Oil SG, Sweetened Condensed Skimmed MILK (MILK, Sugar, Lactose), Vegetable Oil SG, Emulsifier SOYA Lecithin, Icing Sugar (Sugar, Anticaking Agent E341iii), Natural Flavouring), PECAN NUTS (1.6%), MILK Chocolate Chips (1.6%)(Sugar, Cocoa Butter, Skimmed MILK Powder, Cocoa Mass, Whole MILK Powder, Whey Powder (MILK), Anhydrous MILK Fat, Emulsifier: SOYA Lecithin, Natural Vanilla Flavouring), Emulsifier: Mono- and Diglycerides of Fatty Acids, Stabilisers (Guar Gum, Carrageenan, Locust Bean Gum).