

Supplier's Product Code :
Product Added :
Last Updated by Supplier :
erudus id :

SW00251 - ECSCSR
28 March 2024
28 March 2024
9027bd7374144aebbf143473a809baaa



The information on the Erudus System has been supplied by the manufacturers of the products and, whilst the owners of the Erudus System take steps to ensure the information is regularly updated, they give no warranty and no guarantee that the information is accurate. Product information and ingredients may change, please always read product labels carefully in addition to using the information provided by Erudus One.

We do not accept liability for any inaccuracies or incorrect information contained on this site. Please visit <http://www.erudus.com/terms-and-conditions> for full terms and conditions.

Signature Chicken Stock Reduction (S) 6 x 1ltr

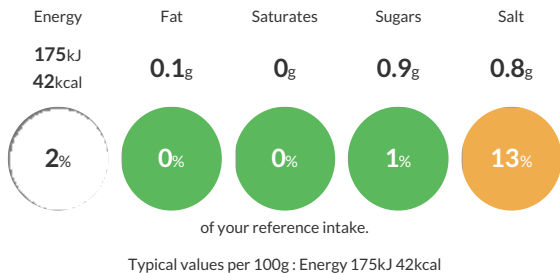
Short Product Name:
Chicken Stock Reduction

A golden brown composite jellified reduced stock with a distinctive aroma of chicken, produced by the blending, heating and sterilisation of food ingredients. It has the characteristic appearance and flavour of a chicken stock when heated and used as directed.

Traded Unit GTIN: 05029540000955 Internal GTIN: 5029540000948 Supplier: Essential Cuisine Limited Suppliers Product Code: SW00251 - ECSCSR

Reference Intake

Each 100g portion contains:

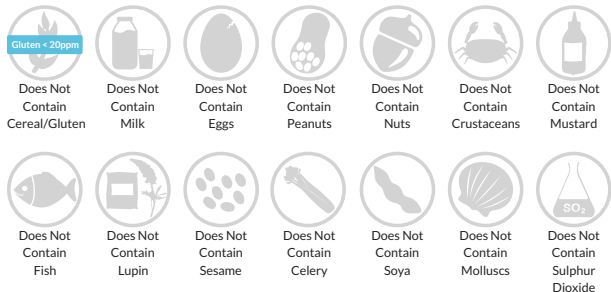


Nutritional Information

Typical Values	Per 100g
Energy	175kJ 42kCal
Carbohydrates	0.9g
of which sugars	0.9g
Fat	0.1g
of which saturates	0g
Fibre	0g
Protein	9.3g
Salt	0.8g

Allergy Information

Key: Contains May Contain



Dietary Information

Key: Suitable for



Gluten Claim

Gluten content is less than 20ppm.

Ingredients

Reduced Chicken Stock (made from Water, Meaty Chicken Bones, Onion, Carrot, Rosemary, Thyme, Bay Leaf, Black Pepper).