

Supplier's Product Code :
Product Added :
Last Updated by Supplier :
erudus id :

SUPM14KG
19 August 2024
19 August 2024
9078ab54c4bd4699821efacca800a96a



The information on the Erudus System has been supplied by the manufacturers of the products and, whilst the owners of the Erudus System take steps to ensure the information is regularly updated, they give no warranty and no guarantee that the information is accurate. Product information and ingredients may change, please always read product labels carefully in addition to using the information provided by Erudus One.

We do not accept liability for any inaccuracies or incorrect information contained on this site. Please visit <http://www.erudus.com/terms-and-conditions> for full terms and conditions.

Vegetable Suet Pastry Mix

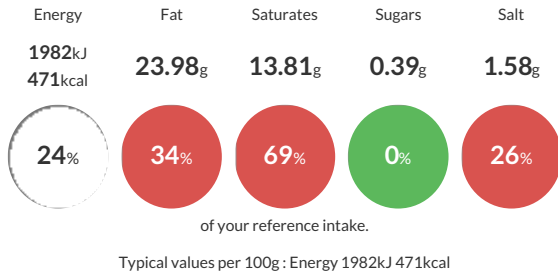
Short Product Name:
Vegetable Suet Pastry Mix

Vegetable Suet Pastry Mix

Traded Unit GTIN: 5020933036599 Internal GTIN: 5020933031600 Supplier: Sleaford Quality Foods Suppliers Product Code: SUPM14KG

Reference Intake

Each 100g portion contains:



Nutritional Information

Typical Values	Per 100g
Energy	1982kJ 471kCal
Carbohydrates	59.16g
of which sugars	0.39g
Fat	23.98g
of which saturates	13.81g
Fibre	2.46g
Protein	8.37g
Salt	1.58g

Allergy Information

Key: Contains May Contain



Dietary Information

Key: Suitable for



Ingredients

WHEAT Flour (WHEAT Flour, Calcium Carbonate, Niacin, Iron, Thiamine), Vegetable Suet (Non Hydrogenated Vegetable Oil (Palm Oil, Sunflower Oil)), WHEAT Flour (WHEAT Flour, Calcium Carbonate, Iron, Niacin, Thiamine), Vegetable Oil (Palm), Rapeseed Oil, Raising Agents (E450i, E341i, E500 (ii)), Salt.