

Supplier's Product Code :
Product Added :
Last Updated by Supplier :
erudus id :

CW033
02 July 2024
02 July 2024
91f7a31d418c46d4b52c566ca05c2121



The information on the **Erudus System** has been supplied by the manufacturers of the products and, whilst the owners of the Erudus System take steps to ensure the information is regularly updated, they give no warranty and no guarantee that the information is accurate. Product information and ingredients may change, please always read product labels carefully in addition to using the information provided by Erudus One.

We do not accept liability for any inaccuracies or incorrect information contained on this site. Please visit <http://www.erudus.com/terms-and-conditions> for full terms and conditions.

Cuisinewine Fortified Ruby 10% Port 4x3L

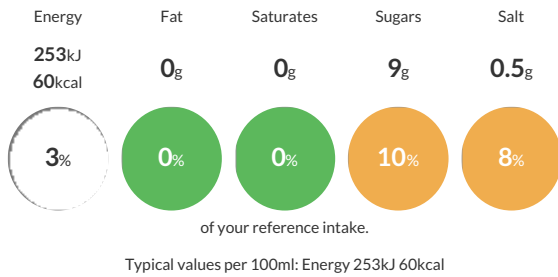
Short Product Name:
Fortified Port

Port styled cooking wine made with 10% real Port

Traded Unit GTIN: - Internal GTIN: 5036585000604 Supplier: Delimport Ltd Suppliers Product Code: CW033

Reference Intake

Each 100ml portion contains:



Nutritional Information

Typical Values	Per 100ml
Energy	253kJ 60kCal
Carbohydrates	9g
of which sugars	9g
Fat	0g
of which saturates	0g
Fibre	0.5g
Protein	0.2g
Salt	0.5g

Allergy Information

Key: **Contains** **May Contain**



Dietary Information

Key: **Suitable for**



Ingredients

Partially de-alcoholised Red Wine (54%), Water (29%), Port (10%), Citric Acid (E330) (0.5%), Sugar (5%), Salt (0.5%), Preservatives (Potassium (E220) **METABISULPHITE**), Colour. For allergens see ingredients in bold.