

Supplier's Product Code :  
Product Added :  
Last Updated by Supplier :  
erudus id :

WS272  
04 June 2024  
04 June 2024  
927661f429be4842b543d4f3d5ace74e



The information on the Erudus System has been supplied by the manufacturers of the products and, whilst the owners of the Erudus System take steps to ensure the information is regularly updated, they give no warranty and no guarantee that the information is accurate. Product information and ingredients may change, please always read product labels carefully in addition to using the information provided by Erudus One.

We do not accept liability for any inaccuracies or incorrect information contained on this site. Please visit <http://www.erudus.com/terms-and-conditions> for full terms and conditions.

## Chocolate Cookies and Cream Cake pre-cut 1x16

Short Product Name:

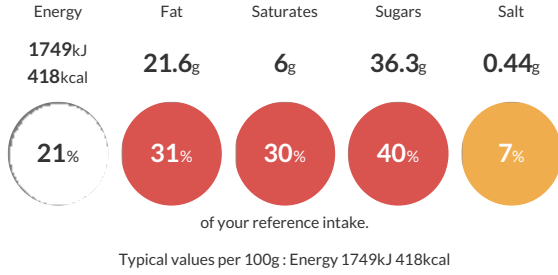
Chocolate Cookies and Cream Cake

A Frozen chocolate sponge cake filled and topped with buttercream infused with chocolate biscuit crumb and finished with chocolate sandwich biscuits with vanilla flavour filling and dark chocolate flavoured drizzle.

Traded Unit GTIN: 5060082386046 Internal GTIN: Supplier: Sussex Bakes Ltd T/A More Food Suppliers Product Code: WS272

### Reference Intake

Each 100g portion contains:



### Nutritional Information

Typical Values	Per 100g
Energy	1749kJ 418kCal
Carbohydrates	52.6g
of which sugars	36.3g
Fat	21.6g
of which saturates	6g
Fibre	1.6g
Protein	3.9g
Salt	0.44g

### Allergy Information

Key: Contains May Contain



### Dietary Information

Key: Suitable for



### Allergen Statement

May contain traces of nuts.

### Ingredients

#### INGREDIENTS:

Sugar, Pasteurised Whole **EGG**, Wheat Flour (**WHEAT**) Flour, Calcium Carbonates, Iron, Niacin, Thiamin), Rapeseed Oil, Water, Butter (**MILK**), Margarine (Palm Oil, Rapeseed Oil, Water, Emulsifier (Mono- and Diglycerides of Fatty Acids)), Filled Chocolate Biscuit Pieces (4%) (**WHEAT**) Flour, Sugar, Palm Oil, Rapeseed Oil, Fat Reduced Cocoa Powder, **WHEAT** Starch, Glucose-Fructose Syrup, Raising Agents (Ammonium Carbonate, Potassium Carbonate, Sodium Carbonate), Salt, Emulsifier (**SOYA** Lecithin), Acidity Regulator (Sodium Hydroxide), Flavouring), Fat Reduced Cocoa Powder, Chocolate Biscuit Crumb (1%) (Wheat Flour (**WHEAT**) Flour, Calcium Carbonate, Iron, Niacin, Thiamin), Vegetable Oils (Palm, Rapeseed), Sugar, Cocoa Powder, Invert Sugar Syrup, Raising Agent (Sodium Carbonate), Salt), Humectant (Glycerol), Dried Glucose Syrup, Whey Powder (**MILK**), Dark Chocolate Flavoured Coating (Sugar, Vegetable Oil (Palm Kernel, Palm), Fat Reduced Cocoa Powder, Wheat Flour (**WHEAT**) Flour, Calcium Carbonates, Iron, Niacin, Thiamin), Whey Powder (**MILK**), Emulsifiers (Lecithins (**SOYA**), Sunflower, Rapeseed), Polyglycerol Polyricinoleate), Natural Flavouring), **WHEAT** Starch, Modified Potato Starch, Raising Agents (Disodium Diphosphate, Sodium Carbonate, Potassium Hydrogen Carbonate), **WHEAT** Gluten, Emulsifiers (Mono- and Diglycerides of Fatty Acids, Sodium Stearoyl-2 Lactylate), Stabilisers (Sodium Carboxy Methyl Cellulose, Guar Gum), Natural Flavouring.