

Supplier's Product Code :
Product Added :
Last Updated by Supplier :
erudus id :

LM17FR6P30
23 August 2021
15 September 2023
92d3c77b41b34364ba694c861ae4b4e5



The information on the **Erudus System** has been supplied by the manufacturers of the products and, whilst the owners of the Erudus System take steps to ensure the information is regularly updated, they give no warranty and no guarantee that the information is accurate. Product information and ingredients may change, please always read product labels carefully in addition to using the information provided by Erudus One.

We do not accept liability for any inaccuracies or incorrect information contained on this site. Please visit <http://www.erudus.com/terms-and-conditions> for full terms and conditions.

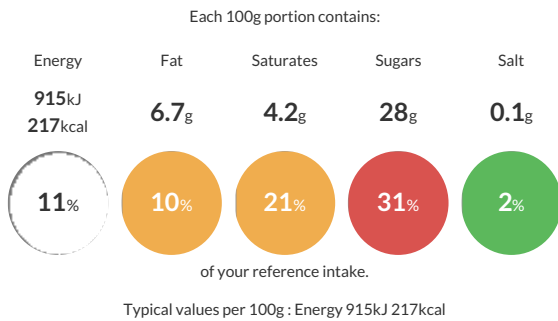
Little Moons Summer Raspberry Mochi Ice Cream 6x32g

We grew up in our family bakery, surrounded by a passion for incredible food from around the world, so when we started Little Moons we wanted to bring that ethos to ice cream. With a mouthful of ice cream lovingly wrapped in soft mochi dough, each Little Moon is a little lift to elevate your day. We hope you love them. Viv & Howard, Founders The higher density of our gelato means it's not as soft straight out the freezer but results in a more intense flavour with patience. Great taste 2020, Joyful calories 70 per ball. Dietary Gluten Free, No Artificial Flavourings, colours or Preservatives, Suitable for Vegetarians.

Ingredients: Whole MILK, sugar, raspberry puree (15%) (raspberry puree, invert sugar syrup), water, rice flour, double cream (MILK), trehalose*, glucose syrup, skimmed MILK powder, raspberry pieces (0.5%), tapioca starch, natural flavouring, beetroot powder, emulsifiers (mono and di glycerides of fatty acids), stabilisers (guar gum, locust bean gum, cellulose gum, carrageenan), salt, SOYA. May also contain NUTS, PEANUTS and SESAME.

Traded Unit GTIN: 05027324001327 Internal GTIN: 5027324001235 Supplier: Little Moons Suppliers Product Code : LM17FR6P30

Reference Intake



Nutritional Information

Typical Values	Per 100g
Energy	915kJ 217kCal
Carbohydrates	37g
of which sugars	28g
Fat	6.7g
of which saturates	4.2g
Fibre	-g
Protein	2.4g
Salt	0.1g

Allergy Information

Key: **Contains** **May Contain**



Gluten Claim

Gluten content is less than 20ppm.

Allergen Statement

May also contain nuts, peanut & sesame.

Dietary Information

Key: **Suitable for**



Ingredients

Whole MILK, sugar, raspberry puree (15%) (raspberry puree, invert sugar syrup), water, rice flour, double cream (MILK), trehalose*, glucose syrup, skimmed MILK powder, raspberry pieces (0.5%), tapioca starch, natural flavouring, beetroot powder, emulsifiers (mono and di glycerides of fatty acids), stabilisers (guar gum, locust bean gum, cellulose gum, carrageenan), salt, SOYA.