

Supplier's Product Code :
Product Added :
Last Updated by Supplier :
erudus id :

20214143
19 April 2021
27 April 2021
92f6084c9bd947299aa4188003341c8c



The information on the Erudus System has been supplied by the manufacturers of the products and, whilst the owners of the Erudus System take steps to ensure the information is regularly updated, they give no warranty and no guarantee that the information is accurate. Product information and ingredients may change, please always read product labels carefully in addition to using the information provided by Erudus One.

We do not accept liability for any inaccuracies or incorrect information contained on this site. Please visit <http://www.erudus.com/terms-and-conditions> for full terms and conditions.

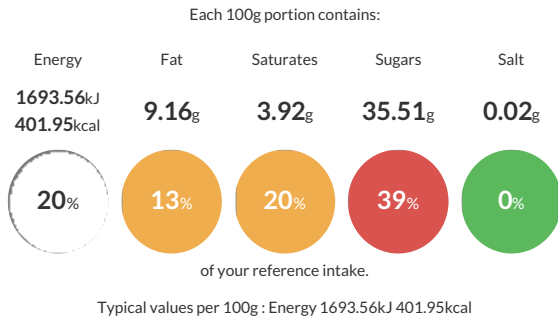
KFF Cherry and Blueberry Crunch

Short Product Name:

A mix of cereals with dried fruits

Traded Unit GTIN: Internal GTIN: Supplier: **Alara Wholefoods Ltd** Suppliers Product Code: **20214143**

Reference Intake



Nutritional Information

Typical Values	Per 100g
Energy	1693.56kJ 401.95kCal
Carbohydrates	68.75g
of which sugars	35.51g
Fat	9.16g
of which saturates	3.92g
Fibre	6.58g
Protein	7.85g
Salt	0.02g

Allergy Information

Key: **Contains** **May Contain**



Allergen Statement

Packed in a factory that handles cereals containing gluten, milk, peanuts, nuts, sesame, soya and Sulphur dioxide.

Dietary Information

Key: **Suitable for**



Ingredients

Oat Crispy Crunch [Wholegrain OATFLAKES (53%), Sugar, Crisp Rice (15%), Rice Flour, Sugar, Malt Extract [from BARLEY], Calcium Carbonate, Sunflower Oil, Emulsifier (Sunflower Lecithin), Palm Oil†, Honey, (2%), Caramelised Sugar Syrup Powder] (76.69%), Raisins Flame [Raisins, Sunflower Oil] (20.45%), Cherries Sour Morello [Dried Cherries, Sugar, Sunflower Oil] (2.04%), Blueberry FD organic (0.82%)