

Supplier's Product Code :
Product Added :
Last Updated by Supplier :
erudus id :

A63210
31 December 2024
31 December 2024
939060892e594615a8a281477fbd914



The information on the [Erudus System](#) has been supplied by the manufacturers of the products and, whilst the owners of the Erudus System take steps to ensure the information is regularly updated, they give no warranty and no guarantee that the information is accurate. Product information and ingredients may change, please always read product labels carefully in addition to using the information provided by Erudus One.

We do not accept liability for any inaccuracies or incorrect information contained on this site. Please visit <http://www.erudus.com/terms-and-conditions> for full terms and conditions.

Panko Breadcrumbs

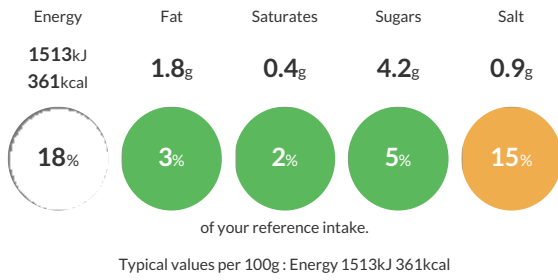
Short Product Name:
Japanese style Panko Breadcrumbs

Panko Breadcrumbs

Traded Unit GTIN: **15017482000222** Internal GTIN: **5017482000225** Supplier: **Martin Mathew & Co Ltd** Suppliers Product Code: **A63210**

Reference Intake

Each 100g portion contains:



Nutritional Information

Typical Values	Per 100g
Energy	1513kJ 361kCal
Carbohydrates	69.3g
of which sugars	4.2g
Fat	1.8g
of which saturates	0.4g
Fibre	3.8g
Protein	14g
Salt	0.9g

Allergy Information

Key: **Contains** **May Contain**



Allergen Statement
contains wheat

Ingredients

WHEAT Flour, Yeast, Salt, Corn Starch, Antioxidant (E300).

Dietary Information

Key: **Suitable for**

