

Supplier's Product Code :
Product Added :
Last Updated by Supplier :
erudus id :

DCP-22EXBRU-E0-89B
28 March 2025
28 March 2025
95594d0adb084f7b926be998e0a6f82c



The information on the Erudus System has been supplied by the manufacturers of the products and, whilst the owners of the Erudus System take steps to ensure the information is regularly updated, they give no warranty and no guarantee that the information is accurate. Product information and ingredients may change, please always read product labels carefully in addition to using the information provided by Erudus One.

We do not accept liability for any inaccuracies or incorrect information contained on this site. Please visit <http://www.erudus.com/terms-and-conditions> for full terms and conditions.

Cacao Barry Extra Brute 22-24% Cocoa powder alkalized 1kg pack

Short Product Name:

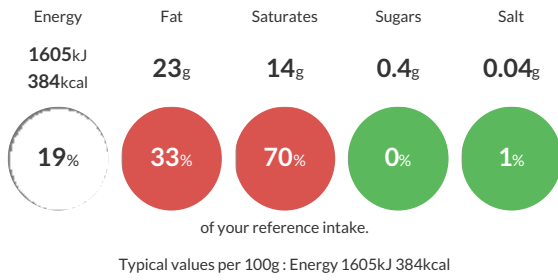
Cacao Barry Extra Brute 22-24% Cocoa powder

Cacao Barry Extra Brute 22-24% Cocoa, 7.6-8.2 (High alkalized), 1 kg pack

Traded Unit GTIN: 13073419330321 Internal GTIN: 3073419330324 Supplier: Barry Callebaut Belgium NV & IBC Belgium Suppliers Product Code: DCP-22EXBRU-E0-89B

Reference Intake

Each 100g portion contains:



Nutritional Information

Typical Values	Per 100g
Energy	1605kJ 384kCal
Carbohydrates	8.8g
of which sugars	0.4g
Fat	23g
of which saturates	14g
Fibre	29g
Protein	19g
Salt	0.04g

Allergy Information

Key: Contains May Contain



Dietary Information

Key: Suitable for



Ingredients

cocoa powder, acidity regulator: E 501i