

Supplier's Product Code :  
Product Added :  
Last Updated by Supplier :  
erudus id :

F10090  
30 October 2024  
30 October 2024  
956cff7d9db144c4a4348f170c8f0940



The information on the Erudus System has been supplied by the manufacturers of the products and, whilst the owners of the Erudus System take steps to ensure the information is regularly updated, they give no warranty and no guarantee that the information is accurate. Product information and ingredients may change, please always read product labels carefully in addition to using the information provided by Erudus One.

We do not accept liability for any inaccuracies or incorrect information contained on this site. Please visit <http://www.erudus.com/terms-and-conditions> for full terms and conditions.

## Jude's Cherries & Clotted Cream Ice Cream - 6 x 4L

Short Product Name:

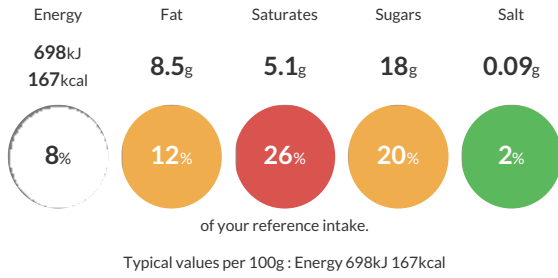
Jude's Cherries & Clotted Cream Ice Cream - 6 x 4L

Clotted Cream Ice Cream with Cherry Ripple

Traded Unit GTIN: 5060081113964 Internal GTIN: 5060081113957 Supplier: Judes Ices Suppliers Product Code: F10090

### Reference Intake

Each 100g portion contains:



### Nutritional Information

Typical Values	Per 100g
Energy	698kJ 167kCal
Carbohydrates	19g
of which sugars	18g
Fat	8.5g
of which saturates	5.1g
Fibre	-g
Protein	2.7g
Salt	0.09g

### Allergy Information

Key: **Contains** **May Contain**



### Dietary Information

Key: **Suitable for**



### Allergen Statement

For allergens see ingredients in bold.

### Ingredients

fresh whole **<b>milk</b>**, cherry sauce (14%) [glucose syrup, sugar, water, concentrated amarena cherry juice (2%), thickener (agar-agar), acid (citric acid), colour (anthocyanins), natural flavouring], sugar, clotted cream (**<b>milk</b>**) (8.9%), fresh double cream (**<b>milk</b>**), skimmed **<b>milk</b>** powder, dextrose, emulsifier (mono- and diglycerides of fatty acids), stabilisers (locust bean gum, guar gum), Bourbon vanilla extract, pasteurised free range **<b>egg</b>** yolk, colour (natural beta carotene).