

Supplier's Product Code :  
Product Added :  
Last Updated by Supplier :  
erudus id :

2557  
16 December 2014  
09 November 2022  
96a9e38879c345e5b4057a45d9d0e85b



The information on the **Erudus System** has been supplied by the manufacturers of the products and, whilst the owners of the Erudus System take steps to ensure the information is regularly updated, they give no warranty and no guarantee that the information is accurate. Product information and ingredients may change, please always read product labels carefully in addition to using the information provided by Erudus One.

We do not accept liability for any inaccuracies or incorrect information contained on this site. Please visit <http://www.erudus.com/terms-and-conditions> for full terms and conditions.

## Cookies and Cream Stack

Short Product Name:

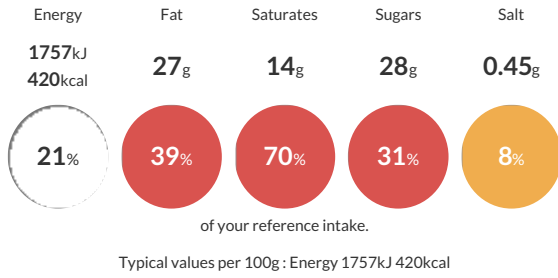
Cookies and Cream Stack

Double layers of brownie sandwich white chocolate cheesecake and gets piled high with white chocolate mousse overflowing with hand-cut chunks of yummy chocolate vanilla filled cookies. Chocolate gnache and more cookies on top send it over the edge.

Traded Unit GTIN: **10749017025572** Internal GTIN: **0749017025575** Supplier: **Sweet Street Desserts** Suppliers Product Code: **2557**

### Reference Intake

Each 100g portion contains:



### Nutritional Information

Typical Values	Per 100g
Energy	1757kJ 420kcal
Carbohydrates	40g
of which sugars	28g
Fat	27g
of which saturates	14g
Fibre	2g
Protein	4g
Salt	0.45g

### Allergy Information

Key: **Contains** **May Contain**



#### Allergen Statement

For allergens, see ingredients that are capitalized.

May contain traces of **PEANUTS, MACADAMIA NUTS, PECAN NUTS, WALNUTS, ALMOND NUTS**

### Dietary Information

Key: **Suitable for**



### Ingredients

sugar, **CREAM (MILK)** (15.76%), Oreo® cookies (11.20%) [**WHEAT** flour, sugar, palm and/or canola oil, cocoa, invert sugar, leavening (baking soda and/or anti-caking agent (E341)), emulsifier (E322 (**SOY**)), salt, chocolate, natural flavour], **EGGS**, **CREAM CHEESE** (10.20%) [pasteurized **MILK** and **CREAM**, salt, cheese cultures], **WHEAT** flour, white confectionary [sugar, palm kernel oil, palm oil, **WHEY (MILK)**, nonfat **MILK**, emulsifier (E322 (**SOY**)), vanilla], **SOYBEAN** oil, chocolate [unsweetened chocolate, sugar, cocoa butter, **MILKFAT**, emulsifier (E322 (**SOY**)), vanilla], cocoa, **BUTTER (MILK)**, sour **CREAM** [cultured **CREAM (MILK)**, nonfat **MILK**, enzymes], evaporated **MILK**, glucose, margarine [**SOYBEAN** oil, palm oil, water, salt, emulsifier (E471), nonfat dry **MILK**, emulsifier (E322 (sunflower))], natural flavour, vitamin A palmitate, colour (E160a), water, coconut oil, salt, natural Madagascar vanilla flavour, gelatin (beef halal), thickener (E1422), emulsifier (E322 (sunflower)).