

Supplier's Product Code :  
 Product Added :  
 Last Updated by Supplier :  
 erudus id :

FB831  
 17 January 2025  
 17 January 2025  
 99d2491d56b8416581b2c9b3209b4f16



The information on the **Erudus System** has been supplied by the manufacturers of the products and, whilst the owners of the Erudus System take steps to ensure the information is regularly updated, they give no warranty and no guarantee that the information is accurate. Product information and ingredients may change, please always read product labels carefully in addition to using the information provided by Erudus One.

We do not accept liability for any inaccuracies or incorrect information contained on this site. Please visit <http://www.erudus.com/terms-and-conditions> for full terms and conditions.

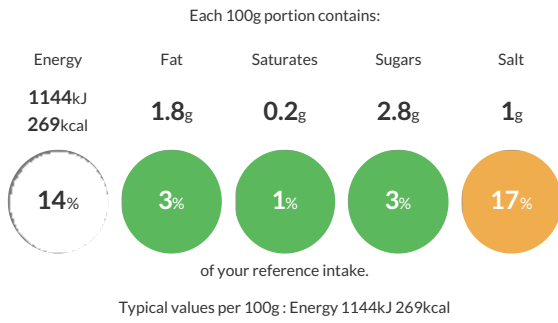
## MINI MULTIGRAIN TIN LOAF

Short Product Name:  
 MINI MULTIGRAIN TIN LOAF

Frozen, fully-baked individual multigrain bread piece

Traded Unit GTIN: **5032633158310** Internal GTIN: Supplier: **Speciality Breads Ltd** Suppliers Product Code: **FB831**

### Reference Intake



### Nutritional Information

Typical Values	Per 100g
Energy	1144kJ 269kCal
Carbohydrates	58g
of which sugars	2.8g
Fat	1.8g
of which saturates	0.2g
Fibre	3.5g
Protein	10g
Salt	1g

### Allergy Information

Key: **Contains** **May Contain**

Contains Cereal/Gluten	May Contain Milk	May Contain Eggs	Does Not Contain Peanuts	Does Not Contain Nuts	Does Not Contain Crustaceans	Does Not Contain Mustard
Does Not Contain Fish	Does Not Contain Lupin	Does Not Contain Sesame	Does Not Contain Celery	Does Not Contain Soya	Does Not Contain Molluscs	Does Not Contain Sulphur Dioxide

### Dietary Information

Key: **Suitable for**

Suitable for Vegetarian	Suitable for Vegan	May not be suitable for Kosher	May not be suitable for Halal	NO DATA for Coeliac
-------------------------	--------------------	--------------------------------	-------------------------------	---------------------

### Ingredients

Malt Flour (<b>Wheat</b> Flour (Fortified with Calcium Carbonate, Iron, Niacin, Thiamin) Malted <b>Wheat</b> Flakes, Malted <b>Barley</b> Flour), Water, Yeast, Reduced Sodium Salt, Vegetable Oils (Palm and Rapeseed), Water, Salt, Emulsifier E 471, Flour Treatment Agent: E 300, Salt