

Supplier's Product Code :  
Product Added :  
Last Updated by Supplier :  
erudus id :

4907  
13 February 2024  
14 February 2024  
9b5bbf79370d4bf792a326320cb8d042



The information on the [Erudus System](#) has been supplied by the manufacturers of the products and, whilst the owners of the Erudus System take steps to ensure the information is regularly updated, they give no warranty and no guarantee that the information is accurate. Product information and ingredients may change, please always read product labels carefully in addition to using the information provided by Erudus One.

We do not accept liability for any inaccuracies or incorrect information contained on this site. Please visit <http://www.erudus.com/terms-and-conditions> for full terms and conditions.

## FB Dairy Cream Chocolate Eclair (16 x 85g approx)

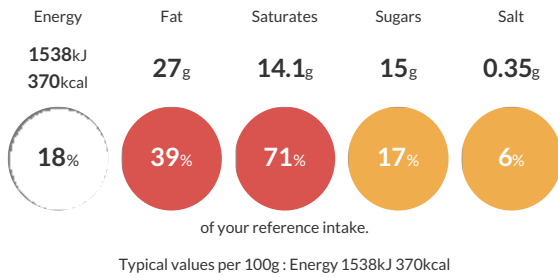
Short Product Name:  
Dairy Cream Chocolate Eclair

Light Choux Pastry, filled with piped Dairy Cream, topped with a lined layer of chocolate fondant and decorated with chocolate lacing.

Traded Unit GTIN: **05018833049078** Internal GTIN: Supplier: **Wrights Food Group** Suppliers Product Code: **4907**

### Reference Intake

Each 100g portion contains:



### Nutritional Information

Typical Values	Per 100g
Energy	1538kJ 370kCal
Carbohydrates	27g
of which sugars	15g
Fat	27g
of which saturates	14.1g
Fibre	0.8g
Protein	4.3g
Salt	0.35g

### Allergy Information

Key: **Contains** **May Contain**



### Dietary Information

Key: **Suitable for**



### Allergen Statement

Allergens: For allergens (including cereals containing gluten) see ingredients in **UPPER CASE**.

### Ingredients

Whipping Cream (<b>Milk</b>) (50%), <b>Egg</b>, Chocolate Fondant (18%) [Sugar, Chocolate (Cocoa Mass, Sugar, Cocoa Butter, Emulsifier (<b>Soya</b></b>Lecithin)), Glucose Syrup, Water, Emulsifier (E471), Preservative (E202)], Choux Concentrate [<b>Wheat</b> Flour (contains Calcium, Iron, Niacin, Thiamin), Rapeseed Oil, Cornflour, Emulsifier (E472c), Raising Agent (E450iii), Salt], Sugar, Dark Chocolate Flavour Coating [Sugar, Palm Oil, Fat Reduced Cocoa Powder, Fortified Wheat Flour (<b>Wheat</b> Flour, Calcium Carbonate, Iron, Niacin, Thiamine), Whey Powder (<b>Milk</b>), Emulsifiers: <b>Soya</b> Lecithin, E476; Natural Flavouring], Rapeseed Oil, Stabilisers (E450, E401).