

Supplier's Product Code :
Product Added :
Last Updated by Supplier :
erudus id :

BFL5271V
18 September 2019
28 April 2023
9b7017dc9a5a4db3ab3c9162c7132eac



The information on the **Erudus System** has been supplied by the manufacturers of the products and, whilst the owners of the Erudus System take steps to ensure the information is regularly updated, they give no warranty and no guarantee that the information is accurate. Product information and ingredients may change, please always read product labels carefully in addition to using the information provided by Erudus One.

We do not accept liability for any inaccuracies or incorrect information contained on this site. Please visit <http://www.erudus.com/terms-and-conditions> for full terms and conditions.

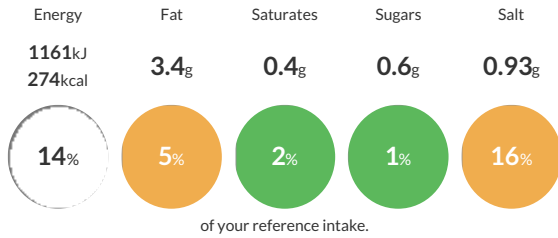
Mini Tear Drop Naan 75g (1 x 24)

Fully baked teardrop shaped naan breads with kalonji seeds (1 x 24)

Traded Unit GTIN: **5022558000924** Internal GTIN: Supplier: **Central Foods Group Ltd** Suppliers Product Code: **BFL5271V**

Reference Intake

Each 100g portion contains:



Typical values per 100g : Energy 1161kJ 274kcal

Nutritional Information

Typical Values	Per 100g
Energy	1161kJ 274kCal
Carbohydrates	52.2g
of which sugars	0.6g
Fat	3.4g
of which saturates	0.4g
Fibre	2.2g
Protein	7.5g
Salt	0.93g

Allergy Information

Key: **Contains** **May Contain**



Allergen Statement

For allergens, including cereals containing gluten, see ingredients in **CAPITALS**

Ingredients

WHEAT Flour (Fortified with Calcium, Iron, Niacin, Thiamin), Water, Rapeseed Oil, Raising Agents (Monocalcium Phosphates, Sodium Bicarbonate), Yeast, Salt, Kalonji Seeds (0.5%), Dextrose.

Dietary Information

Key: **Suitable for**

