

Supplier's Product Code :
Product Added :
Last Updated by Supplier :
erudus id :

EC903
03 February 2014
20 April 2021
9bb92e5ff04f45009aecaa7d444bec14



The information on the Erudus System has been supplied by the manufacturers of the products and, whilst the owners of the Erudus System take steps to ensure the information is regularly updated, they give no warranty and no guarantee that the information is accurate. Product information and ingredients may change, please always read product labels carefully in addition to using the information provided by Erudus One.

We do not accept liability for any inaccuracies or incorrect information contained on this site. Please visit <http://www.erudus.com/terms-and-conditions> for full terms and conditions.

Wensleydale & Cranberry 1.25 Kg

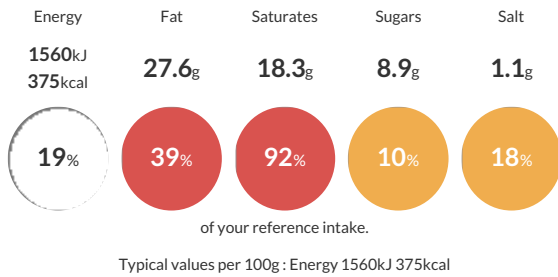
Short Product Name:
Wensleydale & Cranberry

Creamy white Wensleydale cheese with its flaky open texture, fresh clean flavour and honeyed-after taste is only enhanced by the delicate fruity succulence of pure sweet cranberries.

Traded Unit GTIN: Internal GTIN: Supplier: Cheese Cellar (H&B Foods) Suppliers Product Code: EC903

Reference Intake

Each 100g portion contains:



Nutritional Information

Typical Values	Per 100g
Energy	1560kJ 375kCal
Carbohydrates	11.1g
of which sugars	8.9g
Fat	27.6g
of which saturates	18.3g
Fibre	3.5g
Protein	20.6g
Salt	1.1g

Allergy Information

Key: Contains May Contain



Gluten Claim

Gluten content is less than 20ppm.

Allergen Statement

Contains Milk

Ingredients

Wensleydale Cheese (Pasteurised Cow's MILK, Salt, Starter Culture, Vegetarian Rennet), Sweetened Cranberries (13%) [Sugar, Cranberries (34%), Sunflower Oil].

Dietary Information

Key: Suitable for

