

Supplier's Product Code :
Product Added :
Last Updated by Supplier :
erudus id :

44823
24 July 2023
24 July 2023
9c649796c84747888ccf0f6fb9226502



The information on the **Erudus System** has been supplied by the manufacturers of the products and, whilst the owners of the Erudus System take steps to ensure the information is regularly updated, they give no warranty and no guarantee that the information is accurate. Product information and ingredients may change, please always read product labels carefully in addition to using the information provided by Erudus One.

We do not accept liability for any inaccuracies or incorrect information contained on this site. Please visit <http://www.erudus.com/terms-and-conditions> for full terms and conditions.

McVitie's Digestives White Chocolate 12 x 232g (£1.99 PMP)

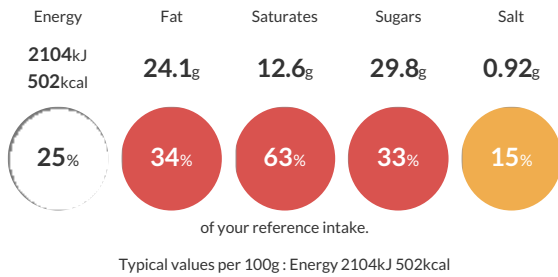
Short Product Name:
Digestives White Chocolate

Wheatmeal Biscuits covered in White Chocolate.

Traded Unit GTIN: **5000168040813** Internal GTIN: **5000168040820** Supplier: **Pladis (UK) Ltd** Suppliers Product Code: **44823**

Reference Intake

Each 100g portion contains:



Nutritional Information

Typical Values	Per 100g
Energy	2104kJ 502kCal
Carbohydrates	63.9g
of which sugars	29.8g
Fat	24.1g
of which saturates	12.6g
Fibre	2.4g
Protein	6g
Salt	0.92g

Allergy Information

Key: **Contains** **May Contain**



Allergen Statement

Contains: Milk, Soya, Gluten.

Ingredients

Flour (39%) (**WHEAT** Flour, Calcium, Iron, Niacin, Thiamin), White Chocolate (28%) [Sugar, Cocoa Butter, Dried Whole **MILK**, Lactose (**MILK**), Dried Whey (**MILK**), Butter Oil (**MILK**), Emulsifiers (**SOYA** Lecithin, E476), Natural Vanilla Flavouring], Palm Oil, Wholemeal **WHEAT** Flour (9%), Sugar, Glucose-Fructose Syrup, Raising Agents (Sodium Bicarbonate, Malic Acid, Ammonium Bicarbonate), Salt.

Dietary Information

Key: **Suitable for**

