

Supplier's Product Code :  
Product Added :  
Last Updated by Supplier :  
erudus id :

PEACHMEL4X5  
07 June 2024  
07 June 2024  
9c86f65dace74df591ba5a7ad99f6841



The information on the **Erudus System** has been supplied by the manufacturers of the products and, whilst the owners of the Erudus System take steps to ensure the information is regularly updated, they give no warranty and no guarantee that the information is accurate. Product information and ingredients may change, please always read product labels carefully in addition to using the information provided by Erudus One.

We do not accept liability for any inaccuracies or incorrect information contained on this site. Please visit <http://www.erudus.com/terms-and-conditions> for full terms and conditions.

## Peach Melba Ice Cream 4x5L

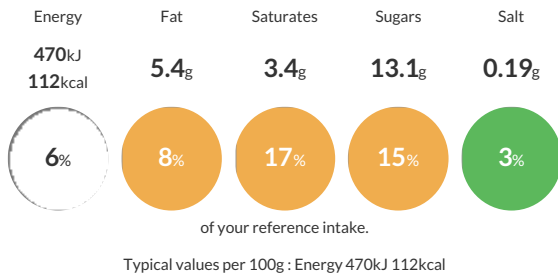
Short Product Name:  
Peach Melba

A rich plain base made Ice cream Cream made with Double cream, real peach pieces and a real fruit raspberry ripple.

Traded Unit GTIN: - Internal GTIN: 5060016675482 Supplier: Yorvale Ltd Suppliers Product Code: PEACHMEL4X5

### Reference Intake

Each 100g portion contains:



### Nutritional Information

Typical Values	Per 100g
Energy	470kJ 112kCal
Carbohydrates	14.3g
of which sugars	13.1g
Fat	5.4g
of which saturates	3.4g
Fibre	0.1g
Protein	2.3g
Salt	0.19g

### Allergy Information

Key: **Contains** **May Contain**



### Dietary Information

Key: **Suitable for**



### Allergen Statement

Made in a factory that produces nut product.

### Ingredients

Whole **MILK**, Double Cream (**MILK**), Sugar, Peach Sauce (8.0%)(Peach Dice, Glucose-Fructose Syrup, Water, Sugar, Stabiliser: Modified Waxy Maize Starch, Natural Flavouring, Acidity Regulator: Citric Acid, Colour: Annatto Extract), Skimmed **MILK** Powder, Raspberry Ripple (Raspberries, Sugar, Glucose Syrup, Water, Gelling Agent: Pectin, Acidity Regulators: Citric Acid, Trisodium Citrate, Natural Flavouring), Glucose Syrup, Emulsifier: Mono- and Diglycerides of Fatty Acids, Stabilisers (Guar Gum, Carrageenan, Locust Bean Gum), Salt.