

Supplier's Product Code :
Product Added :
Last Updated by Supplier :
erudus id :

FDCAN53
28 December 2022
07 August 2024
9d62aabad1f14a2d9f79d034b868b825



The information on the **Erudus System** has been supplied by the manufacturers of the products and, whilst the owners of the Erudus System take steps to ensure the information is regularly updated, they give no warranty and no guarantee that the information is accurate. Product information and ingredients may change, please always read product labels carefully in addition to using the information provided by Erudus One.

We do not accept liability for any inaccuracies or incorrect information contained on this site. Please visit <http://www.erudus.com/terms-and-conditions> for full terms and conditions.

Mini Black Forests (1 x 48)

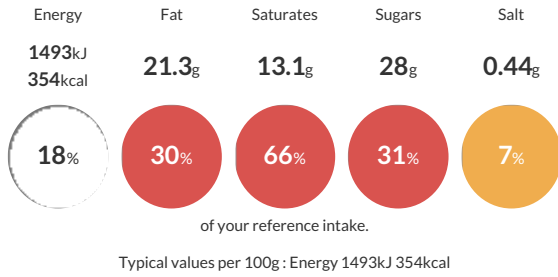
Short Product Name:

Mini, rich chocolate sponge cakes topped with a fresh, double cream swirl and home-made sour cherry compôte, all sprinkled with dark chocolate shavings. Approx. 16g each. Suitable for vegetarians. (1 x 48)

Traded Unit GTIN: **5060089681472** Internal GTIN: Supplier: **Central Foods Group Ltd** Suppliers Product Code: **FDCAN53**

Reference Intake

Each 100g portion contains:



Nutritional Information

Typical Values	Per 100g
Energy	1493kJ 354kCal
Carbohydrates	38.7g
of which sugars	28g
Fat	21.3g
of which saturates	13.1g
Fibre	1.5g
Protein	4.3g
Salt	0.44g

Allergy Information

Key: **Contains** **May Contain**



Dietary Information

Key: **Suitable for**



Allergen Statement

For allergens, including cereals containing gluten, see ingredients in **CAPITALS**.

Ingredients

Sponge (Whole **EGG**, Butter (**MILK**), Caster Sugar, Fortified Self Raising Flour (**WHEAT** Flour (with Calcium, Iron, Niacin, Thiamin), Raising Agents (Sodium Carbonates, Calcium Phosphates)), Cocoa Powder), Cream Topping (Double Cream (14%) (**MILK**), Caster Sugar, Vanilla), Cherry Compote (Red Sour Cherries (13%), Granulated Sugar, Modified Maize Starch, Acidity Regulator (Citric Acid)), Dark Chocolate (2%) (Cocoa Mass, Sugar, Cocoa Butter, **SOYA** Lecithin, Natural Vanilla).