

The information on the Erudus System has been supplied by the manufacturers of the products and, whilst the owners of the Erudus System take steps to ensure the information is regularly updated, they give no warranty and no guarantee that the information is accurate. Product information and ingredients may change, please always read product labels carefully in addition to using the information provided by Erudus One.

We do not accept liability for any inaccuracies or incorrect information contained on this site. Please visit <http://www.erudus.com/terms-and-conditions> for full terms and conditions.

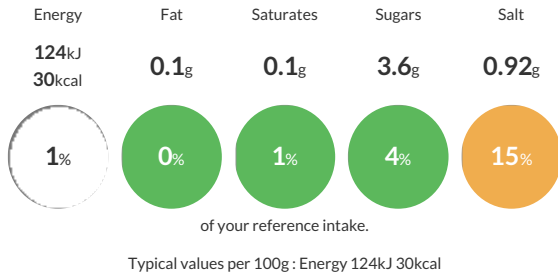
Santa Maria Salsa 950g

Enjoy a burst of vibrant flavour in every bite. Spoon over grilled chicken or pair with Santa Maria Tortilla Chips for a zesty snack.

Traded Unit GTIN: 17311310455757 Internal GTIN: 7311310455750 Supplier: Santa Maria UK Suppliers Product Code: 45575UK

Reference Intake

Each 100g portion contains:



Nutritional Information

Typical Values	Per 100g
Energy	124kJ 30kCal
Carbohydrates	5.4g
of which sugars	3.6g
Fat	0.1g
of which saturates	0.1g
Fibre	-g
Protein	1.2g
Salt	0.92g

Allergy Information

Key: **Contains** **May Contain**

Does Not Contain Cereal/Gluten	Does Not Contain Milk	Does Not Contain Eggs	Does Not Contain Peanuts	Does Not Contain Nuts	Does Not Contain Crustaceans	Does Not Contain Mustard
Does Not Contain Fish	Does Not Contain Lupin	Does Not Contain Sesame	Does Not Contain Celery	Does Not Contain Soya	Does Not Contain Molluscs	Does Not Contain Sulphur Dioxide

Gluten Claim

Gluten content is less than 20ppm.

Ingredients

Tomatoes (65%), onion (12%), tomato purée, peppers, jalapeño (1%), salt, corn starch, garlic purée (0.4%), lime juice concentrate, coriander leaf, acidity regulator (E330), black pepper.

Dietary Information

Key: **Suitable for**

Suitable for Vegetarian	Suitable for Vegan	May not be suitable for Kosher	Suitable for Halal	Suitable for Coeliac
-------------------------	--------------------	--------------------------------	--------------------	----------------------