

Supplier's Product Code :
Product Added :
Last Updated by Supplier :
erudus id :

CM0003
06 June 2024
06 June 2024
9e73b88f7a4e484e81b2bdf2c3e72a74



The information on the **Erudus System** has been supplied by the manufacturers of the products and, whilst the owners of the Erudus System take steps to ensure the information is regularly updated, they give no warranty and no guarantee that the information is accurate. Product information and ingredients may change, please always read product labels carefully in addition to using the information provided by Erudus One.

We do not accept liability for any inaccuracies or incorrect information contained on this site. Please visit <http://www.erudus.com/terms-and-conditions> for full terms and conditions.

White Bread Roll Mix 4 x 3.5kg

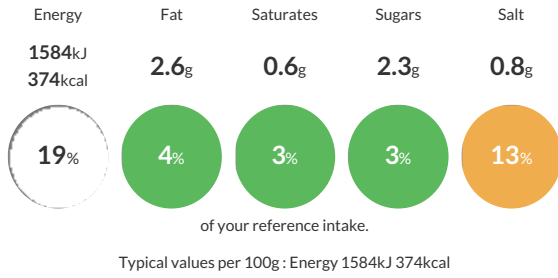
Short Product Name:
White Bread Roll Mix

A light, soft textured bread pre mix. Suitable for Bread Rolls & Tin Loaves *Yeast included*

Traded Unit GTIN: **5028081002886** Internal GTIN: **5028081002367** Supplier: **Middleton Foods** Suppliers Product Code: **CM0003**

Reference Intake

Each 100g portion contains:



Nutritional Information

Typical Values	Per 100g
Energy	1584kJ 374kCal
Carbohydrates	74g
of which sugars	2.3g
Fat	2.6g
of which saturates	0.6g
Fibre	4.1g
Protein	12.7g
Salt	0.8g

Allergy Information

Key: **Contains** **May Contain**



Dietary Information

Key: **Suitable for**



Ingredients

WHEAT Flour (WHEAT, Calcium, Iron, Niacin, Thiamin), SOYA Flour, Dried Yeast, Dextrose, Salt, Vegetable Oil Blend (Palm & Rapeseed Oil), Emulsifier (WHEAT Flour (WHEAT, Calcium, Iron, Niacin and Thiamin), E472(e), E516, E330).