

Supplier's Product Code :
Product Added :
Last Updated by Supplier :
erudus id :

18648606
11 June 2024
11 June 2024
9ed6693b46db4213ad2c0bf710831dd7



The information on the Erudus System has been supplied by the manufacturers of the products and, whilst the owners of the Erudus System take steps to ensure the information is regularly updated, they give no warranty and no guarantee that the information is accurate. Product information and ingredients may change, please always read product labels carefully in addition to using the information provided by Erudus One.

We do not accept liability for any inaccuracies or incorrect information contained on this site. Please visit <http://www.erudus.com/terms-and-conditions> for full terms and conditions.

Heartbrand Ice Cream Stick Feast Original chunky chocolate 90 ML

Short Product Name:

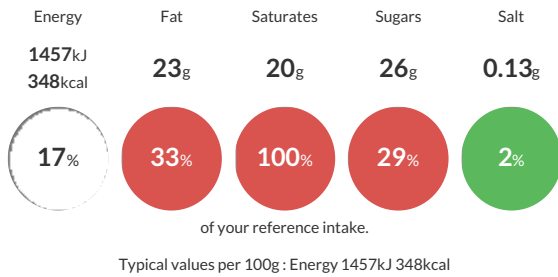
Heartbrand Ice Cream Stick Feast Original chunky chocolate 90 ML

Chocolate flavour ice cream with a solid chocolate flavour centre (13%) and crisp chocolate flavour coating (19%) with biscuit pieces (1,5%).

Traded Unit GTIN: **8000920864869** Internal GTIN: **8712100888274** Supplier: **Unilever UK Limited** Suppliers Product Code: **18648606**

Reference Intake

Each 100g portion contains:



Nutritional Information

| Typical Values | Per 100g |
|--------------------|-------------------|
| Energy | 1457kJ 348kCal |
| Carbohydrates | 32g |
| of which sugars | 26g |
| Fat | 23g |
| of which saturates | 20g |
| Fibre | -g |
| Protein | 3.1g |
| Salt | 0.13g |

Allergy Information

Key: **Contains** **May Contain**



Allergen Statement

May contain: hazelnut, almond, egg.

Ingredients

Ingredients: Reconstituted skimmed MILK, coconut oil, sugar, glucose syrup, glucose-fructose syrup, skimmed MILK powder, WHEAT flour, fat-reduced cocoa powder, emulsifiers (SOYBEAN lecithin, mono- and diglycerides of fatty acids), whey solids (MILK), stabilisers (guar gum, locust bean gum), flavouring, salt, raising agent (ammonium hydrogen carbonate).

Dietary Information

Key: **Suitable for**

