

Supplier's Product Code :
 Product Added :
 Last Updated by Supplier :
 erudus id :

10142945 11/2024
 19 February 2025
 20 February 2025
 9feb9915cda644af91c8d88c778694ad



The information on the **Erudus System** has been supplied by the manufacturers of the products and, whilst the owners of the Erudus System take steps to ensure the information is regularly updated, they give no warranty and no guarantee that the information is accurate. Product information and ingredients may change, please always read product labels carefully in addition to using the information provided by Erudus One.

We do not accept liability for any inaccuracies or incorrect information contained on this site. Please visit <http://www.erudus.com/terms-and-conditions> for full terms and conditions.

Baker & Baker 95% Baked Lemon and Poppy Seed Muffin (24 x 125g)

Short Product Name:

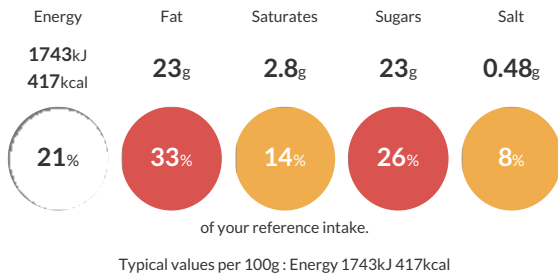
B&B 95% Baked Lemon Poppy Seed Muffin

Muffin with lemon comminute and poppy seeds, quick frozen.

Traded Unit GTIN: **05025183034364** Internal GTIN: **5025183034364** Supplier: **Baker & Baker Products UK Ltd** Suppliers Product Code: **10142945 11/2024**

Reference Intake

Each 100g portion contains:



Nutritional Information

Typical Values	Per 100g
Energy	1743kJ 417kCal
Carbohydrates	47g
of which sugars	23g
Fat	23g
of which saturates	2.8g
Fibre	1.6g
Protein	5g
Salt	0.48g

Allergy Information

Key: **Contains** **May Contain**



Allergen Statement

May contain traces of: **NUTS, SOY.**

Ingredients

Wheat flour (**WHEAT**) (Wheat flour (**WHEAT**); Calcium carbonate; Niacin; Iron; Thiamine); Sugar; Rapeseed oil; Water; Whole egg powder (**EGG**); Skimmed milk powder (**MILK**); Lemon comminute (1.9%); Poppy seed (1.9%); Wheat starch (**WHEAT**); Raising agent: Sodium carbonates, Diphosphates, Calcium phosphates; Palm oil; Modified starch; Emulsifier: Sodium stearoyl-2- lactylate, Mono- and diglycerides of fatty acids; Flavouring; Dextrose; Salt; Thickener: Xanthan gum; Colour: Lutein, Annatto norbixin.

Dietary Information

Key: **Suitable for**

