

Supplier's Product Code :
Product Added :
Last Updated by Supplier :
erudus id :

210034.651639
18 September 2024
18 September 2024
a03992e1c3c24d07848f20941b907b7d



The information on the **Erudus System** has been supplied by the manufacturers of the products and, whilst the owners of the Erudus System take steps to ensure the information is regularly updated, they give no warranty and no guarantee that the information is accurate. Product information and ingredients may change, please always read product labels carefully in addition to using the information provided by Erudus One.

We do not accept liability for any inaccuracies or incorrect information contained on this site. Please visit <http://www.erudus.com/terms-and-conditions> for full terms and conditions.

Almond Croissant

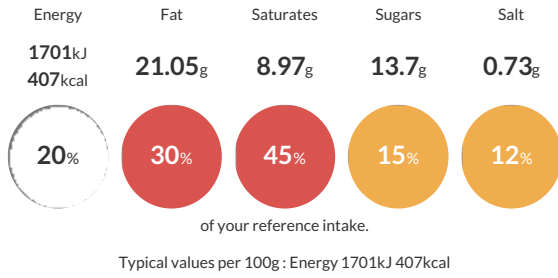
Short Product Name:
Almond Croissant

An unbaked, frozen, pre-proved croissant with almond filling, topped with flaked almonds.

Traded Unit GTIN: **05038910006756** Internal GTIN: Supplier: **Lantmannen Unibake** Suppliers Product Code: **210034.651639**

Reference Intake

Each 100g portion contains:



Nutritional Information

Typical Values	Per 100g
Energy	1701kJ 407kCal
Carbohydrates	43.85g
of which sugars	13.7g
Fat	21.05g
of which saturates	8.97g
Fibre	2.35g
Protein	9.3g
Salt	0.73g

Allergy Information

Key: **Contains** **May Contain**



Dietary Information

Key: **Suitable for**



Allergen Statement

For allergens, including cereals containing gluten, see ingredients in capitals. May also contain traces of other nuts.

Ingredients

Dough: **WHEAT** Flour (contains: **WHEAT** Gluten), Water, Palm Fat, Yeast, Sugar, Butter (**MILK**), Coconut Oil, Rapeseed Oil, Salt, Baking Improver (**WHEAT** Gluten, **WHEAT** Flour, Flour Treatment Agent (Ascorbic Acid E300)), Emulsifier (Mono- and diglycerides of fatty acids E471), Acidity Regulator (Citric Acid E330), Flavouring, **EGG**, **ALMOND** Filling (19%) (Sugar, **ALMONDS** (6.5%), **EGG** White, Inverted Sugar Syrup, Water, **EGG** Yolk, Invertase E1103). Topping: **ALMOND** Flakes (4.2%). Inclusion: 1 x 65g Icing Sugar Pot (Icing Sugar, Potato Starch).