

Supplier's Product Code :
Product Added :
Last Updated by Supplier :
erudus id :

A90005
06 January 2025
06 January 2025
a1074486f6d14429ac4e3bc798e5a37



The information on the **Erudus System** has been supplied by the manufacturers of the products and, whilst the owners of the Erudus System take steps to ensure the information is regularly updated, they give no warranty and no guarantee that the information is accurate. Product information and ingredients may change, please always read product labels carefully in addition to using the information provided by Erudus One.

We do not accept liability for any inaccuracies or incorrect information contained on this site. Please visit <http://www.erudus.com/terms-and-conditions> for full terms and conditions.

Menz & Gasser Strawberry Jam 100 x 20g

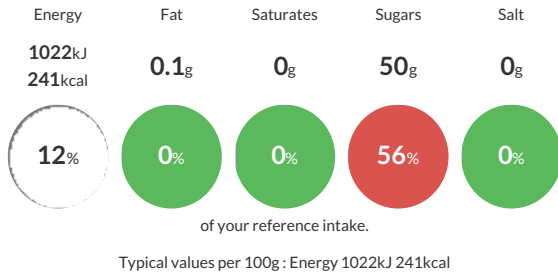
Short Product Name:
Strawberry Jam

Strawberry Jam

Traded Unit GTIN: **8008660014131** Internal GTIN: Supplier: **Martin Mathew & Co Ltd** Suppliers Product Code: **A90005**

Reference Intake

Each 100g portion contains:



Nutritional Information

| Typical Values | Per 100g |
|--------------------|-------------------|
| Energy | 1022kJ 241kCal |
| Carbohydrates | 59g |
| of which sugars | 50g |
| Fat | 0.1g |
| of which saturates | 0g |
| Fibre | 0.6g |
| Protein | 0.3g |
| Salt | 0g |

Allergy Information

Key: **Contains** **May Contain**



Dietary Information

Key: **Suitable for**



Ingredients

Glucose-Fructose Syrup, Strawberries (35%), Sugar, Gelling Agent: Pectin, Acidity Regulator: Citric Acid, Elderberry Juice Concentrate.