

Supplier's Product Code :  
 Product Added :  
 Last Updated by Supplier :  
 erudus id :

10083739  
 20 January 2025  
 21 January 2025  
 a197b7f133dd42168aeaf3c1bebed99



The information on the **Erudus System** has been supplied by the manufacturers of the products and, whilst the owners of the Erudus System take steps to ensure the information is regularly updated, they give no warranty and no guarantee that the information is accurate. Product information and ingredients may change, please always read product labels carefully in addition to using the information provided by Erudus One.

We do not accept liability for any inaccuracies or incorrect information contained on this site. Please visit <http://www.erudus.com/terms-and-conditions> for full terms and conditions.

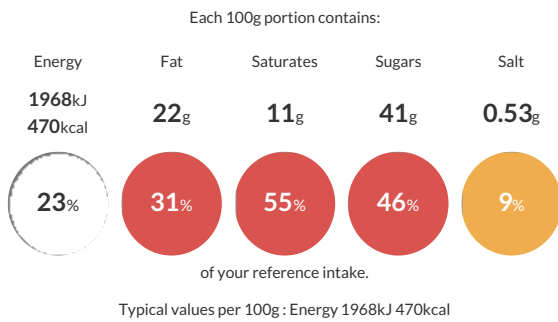
## Baker & Baker White Chocolate Supreme Cookie (90 x 50g)

Short Product Name:  
 White Chocolate Supreme Cookie

Cookie puck with white chocolate pieces, unbaked, quick frozen

Traded Unit GTIN: **4017040885920** Internal GTIN: Supplier: **Baker & Baker Products UK Ltd** Suppliers Product Code: **10083739**

### Reference Intake



### Nutritional Information

Typical Values	Per 100g
Energy	1968kJ 470kCal
Carbohydrates	65g
of which sugars	41g
Fat	22g
of which saturates	11g
Fibre	1.1g
Protein	3.5g
Salt	0.53g

### Allergy Information

Key: **Contains** **May Contain**



**Allergen Statement**  
 May contain Nuts, Egg

### Ingredients

Wheat flour (**WHEAT**) (Wheat flour (**WHEAT**); Calcium carbonate; Niacin; Iron; Thiamine); Sugar; White chocolate pieces (22%) (Sugar; Cocoa butter; Whole milk powder ( **MILK**); Whey powder (**MILK**); Milk fat (**MILK**); Lactose (**MILK**); Vegetable fats: Palm, Shea, Sal fat, (in varying proportions); Emulsifier: Lecithins (**SOY**); Flavouring); Palm oil; Water; Rapeseed oil; Butter (**MILK**); Whey powder (**MILK**); Humectant: Glycerol; Coconut oil; Raising agent: Sodium carbonates, Diphosphates; Molasses; Salt; Flavourings; Emulsifier: Mono- and diglycerides of fatty acids.

### Dietary Information

Key: **Suitable for**

