

Supplier's Product Code :
Product Added :
Last Updated by Supplier :
erudus id :

CRC350
27 September 2021
10 November 2022
a4d86e4b83d348beb678931578c2ccb1



The information on the Erudus System has been supplied by the manufacturers of the products and, whilst the owners of the Erudus System take steps to ensure the information is regularly updated, they give no warranty and no guarantee that the information is accurate. Product information and ingredients may change, please always read product labels carefully in addition to using the information provided by Erudus One.

We do not accept liability for any inaccuracies or incorrect information contained on this site. Please visit <http://www.erudus.com/terms-and-conditions> for full terms and conditions.

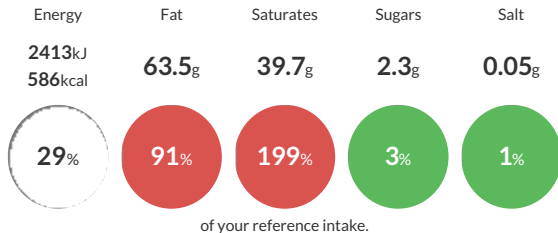
Cornish Clotted Cream 453g x 4

Cornish Clotted Cream

Traded Unit GTIN: 05019608453441 Internal GTIN: 5019608016004 Supplier: A.E. Rodda & Son Suppliers Product Code: CRC350

Reference Intake

Each 100g portion contains:



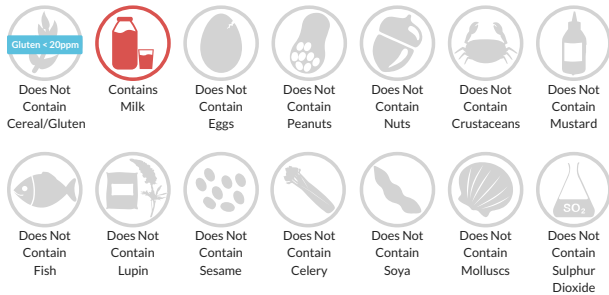
Typical values per 100g : Energy 2413kJ 586kcal

Nutritional Information

Typical Values	Per 100g
Energy	2413kJ 586kCal
Carbohydrates	2.3g
of which sugars	2.3g
Fat	63.5g
of which saturates	39.7g
Fibre	0g
Protein	1.6g
Salt	0.05g

Allergy Information

Key: **Contains** **May Contain**



Gluten Claim

Gluten content is less than 20ppm.

Allergen Statement

GLUTEN - No **GLUTEN** on site or in products
SULPHUR - No **SULPHUR** in products or on site
Contains **MILK**

Ingredients

100% Cow's **MILK**

Dietary Information

Key: **Suitable for**

