

Supplier's Product Code :
 Product Added :
 Last Updated by Supplier :
 erudus id :

CCC350
 30 May 2024
 30 May 2024
 a50d36d6f8734edb9edda6953b77a46d



The information on the **Erudus System** has been supplied by the manufacturers of the products and, whilst the owners of the Erudus System take steps to ensure the information is regularly updated, they give no warranty and no guarantee that the information is accurate. Product information and ingredients may change, please always read product labels carefully in addition to using the information provided by Erudus One.

We do not accept liability for any inaccuracies or incorrect information contained on this site. Please visit <http://www.erudus.com/terms-and-conditions> for full terms and conditions.

Chilli Con Carne (350g) 350g x 12

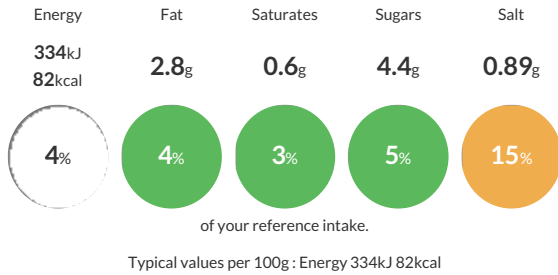
Short Product Name:
 Chilli Con Carne

Tender minced beef in a spicy tomato based sauce with red and green peppers and red kidney beans

Traded Unit GTIN: **5055775100559** Internal GTIN: Supplier: **Scheff Foods Ltd** Suppliers Product Code: **CCC350**

Reference Intake

Each 100g portion contains:



Nutritional Information

Typical Values	Per 100g
Energy	334kJ 82kCal
Carbohydrates	8.3g
of which sugars	4.4g
Fat	2.8g
of which saturates	0.6g
Fibre	2.1g
Protein	5.2g
Salt	0.89g

Allergy Information

Key: **Contains** **May Contain**

Contains Cereal/Gluten	Does Not Contain Milk	Does Not Contain Eggs	Does Not Contain Peanuts	May Contain Nuts	Does Not Contain Crustaceans	Does Not Contain Mustard
Does Not Contain Fish	Does Not Contain Lupin	Does Not Contain Sesame	Does Not Contain Celery	Does Not Contain Soya	Does Not Contain Molluscs	Does Not Contain Sulphur Dioxide

Dietary Information

Key: **Suitable for**

May not be suitable for Vegetarian	May not be suitable for Vegan	May not be suitable for Kosher	May not be suitable for Halal	NO DATA for Coeliac
------------------------------------	-------------------------------	--------------------------------	-------------------------------	---------------------

Ingredients

Tomato, Red Kidney Beans (Water, Salt), Water, Onion, Cooked Minced Beef (10%), Capsicum, Tomato Puree, Rapeseed Oil, Sugar, Demi Glaze (Modified Maize Starch, Fortified **WHEAT** Flour (Calcium Carbonate, Iron, Niacin, Thiamin), Maltodextrin, Sugar, Yeast Extract, Palm Oil, Tomato), Jalapeno (Water, Vinegar, Salt, Firming Agent E509, Preservative E202), Fortified **WHEAT** Flour (Calcium Carbonate, Niacin, Iron, Thiamin), Beef Gravy Mix (Fortified **WHEAT** Flour (Calcium Carbonate, Iron, Niacin, Thiamin), Modified Potato Starch, Salt, **BARLEY** Malt Extract, Yeast Extract, Onion Powder, Sunflower Oil, Flavouring, Beef Powder, Acid E330, Bay), Cumin, Salt, Paprika, Cayenne Pepper, Chilli, Pepper.