

Supplier's Product Code :
 Product Added :
 Last Updated by Supplier :
 erudus id :

10143702
 17 January 2025
 20 January 2025
 a727561896da4fd4b3d12a9f0a0a8b7a



The information on the Erudus System has been supplied by the manufacturers of the products and, whilst the owners of the Erudus System take steps to ensure the information is regularly updated, they give no warranty and no guarantee that the information is accurate. Product information and ingredients may change, please always read product labels carefully in addition to using the information provided by Erudus One.

We do not accept liability for any inaccuracies or incorrect information contained on this site. Please visit <http://www.erudus.com/terms-and-conditions> for full terms and conditions.

Baker & Baker 95% Baked Rasp Wht Choc Muffin (24 x 125g)

Short Product Name:

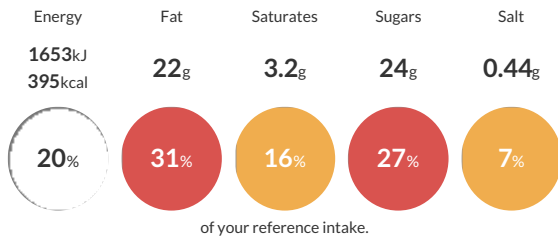
B&B 95% Baked Raspberry and White Chocolate Muffin

Raspberry & White Chocolate, with juicy raspberries and delicious white chocolate, these two flavour combos make this muffin another all-time favourite! 95% baked, simply thaw & serve or bake off for a further 10 minutes to give a freshly baked aroma in store.

Traded Unit GTIN: 5025183034371 Internal GTIN: 5025183029100 Supplier: Baker & Baker Products UK Ltd Suppliers Product Code: 10143702

Reference Intake

Each 100g portion contains:



Typical values per 100g : Energy 1653kJ 395kcal

Nutritional Information

Typical Values	Per 100g
Energy	1653kJ 395kCal
Carbohydrates	45g
of which sugars	24g
Fat	22g
of which saturates	3.2g
Fibre	1g
Protein	4.6g
Salt	0.44g

Allergy Information

Key: Contains May Contain



Allergen Statement

May contain Nuts

Dietary Information

Key: Suitable for



Ingredients

Wheat flour (WHEAT) (Wheat flour (WHEAT); Calcium carbonate; Niacin; Iron; Thiamine); Sugar; Rapeseed oil; Water; Raspberries (8,6%); White Chocolate (4,4%) (Sugar; Cocoa butter; Whole milk powder (MILK); Emulsifier: Lecithins (SOY); Flavouring); Whole egg powder (EGG); Skimmed milk powder (MILK); Wheat starch (WHEAT); Raising agent: Sodium carbonates, Diphosphates, Calcium phosphates; Palm oil; Modified starch; Emulsifier: Sodium stearoyl-2- lactylate, Mono- and diglycerides of fatty acids; Dextrose; Salt; Thickener: Xanthan gum; Flavouring; Colour: Annatto norbixin.