

Supplier's Product Code :
Product Added :
Last Updated by Supplier :
erudus id :

ASF109
22 July 2015
13 May 2022
a8d1590f1ffc4024954ab15583e21320



The information on the **Erudus System** has been supplied by the manufacturers of the products and, whilst the owners of the Erudus System take steps to ensure the information is regularly updated, they give no warranty and no guarantee that the information is accurate. Product information and ingredients may change, please always read product labels carefully in addition to using the information provided by Erudus One.

We do not accept liability for any inaccuracies or incorrect information contained on this site. Please visit <http://www.erudus.com/terms-and-conditions> for full terms and conditions.

SWEET TAMARIND SAUCE

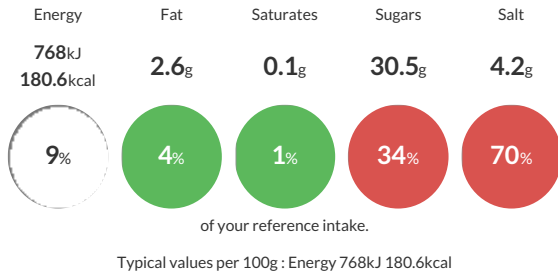
Short Product Name:
SWEET TAMARIND SAUCE

Sweet and tangy Thai tamarind sauce

Traded Unit GTIN: **05060445470054** Internal GTIN: **5060445470047** Supplier: **The Street Food Company** Suppliers Product Code: **ASF109**

Reference Intake

Each 100g portion contains:



Nutritional Information

Typical Values	Per 100g
Energy	768kJ 180.6kCal
Carbohydrates	34.7g
of which sugars	30.5g
Fat	2.6g
of which saturates	0.1g
Fibre	0.5g
Protein	4.6g
Salt	4.2g

Allergy Information

Key: **Contains** **May Contain**



Dietary Information

Key: **Suitable for**



Ingredients

Tomato, Sugar, **FISH** Sauce, **SOY** Sauce, Spirit Vinegar, Water, Garlic, Rapeseed Oil, Vegetable Bouillon, Tamarind Puree (1.6%), Onions, Salt, Spring Onions.

FISH Sauce contains: Water, Salt, **ANCHOVY (FISH)**, Sugar

SOY Sauce contains: Water, **SOYA BEANS**, **WHEAT**, Salt

Vegetable Bouillon contains: **CELERY**