

Supplier's Product Code :
Product Added :
Last Updated by Supplier :
erudus id :

ASUCH4
16 November 2006
28 September 2023
a90205b8f66b40c9a1ae0a11b277ff46



The information on the **Erudus System** has been supplied by the manufacturers of the products and, whilst the owners of the Erudus System take steps to ensure the information is regularly updated, they give no warranty and no guarantee that the information is accurate. Product information and ingredients may change, please always read product labels carefully in addition to using the information provided by Erudus One.

We do not accept liability for any inaccuracies or incorrect information contained on this site. Please visit <http://www.erudus.com/terms-and-conditions> for full terms and conditions.

Summertime Chocolate Ice Cream 4 litre

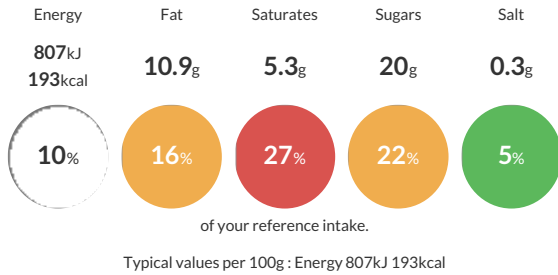
Short Product Name:
Chocolate Ice Cream

Soft Scoop Chocolate Flavour Ice Cream

Traded Unit GTIN: **15010603000552** Internal GTIN: **5010603000555** Supplier: **Suncream Dairies Ltd.** Suppliers Product Code: **ASUCH4**

Reference Intake

Each 100g portion contains:



Nutritional Information

Typical Values	Per 100g
Energy	807kJ 193kCal
Carbohydrates	20.3g
of which sugars	20g
Fat	10.9g
of which saturates	5.3g
Fibre	0.7g
Protein	3.2g
Salt	0.3g

Allergy Information

Key: **Contains** **May Contain**



Gluten Claim

Gluten content is less than 20ppm.

Ingredients

Water, Sugar, Palm Oil, Buttermilk Powder (MILK), Whey Powder (MILK), Dextrose, Fat Reduced Cocoa Powder (1.5%), Skimmed Milk Powder (MILK), Emulsifier (Mono & Di Glycerides of Fatty Acids), Stabilisers(Cellulose Gum, Guar Gum, Locust Bean Gum).

Dietary Information

Key: **Suitable for**

