

Supplier's Product Code :  
Product Added :  
Last Updated by Supplier :  
erudus id :

070914  
07 February 2024  
07 February 2024  
aa15ae9bf5dd4a37b32df26b05d44ef4



The information on the Erudus System has been supplied by the manufacturers of the products and, whilst the owners of the Erudus System take steps to ensure the information is regularly updated, they give no warranty and no guarantee that the information is accurate. Product information and ingredients may change, please always read product labels carefully in addition to using the information provided by Erudus One.

We do not accept liability for any inaccuracies or incorrect information contained on this site. Please visit <http://www.erudus.com/terms-and-conditions> for full terms and conditions.

## TOFFEE CAKE (1 x 14 ptn)

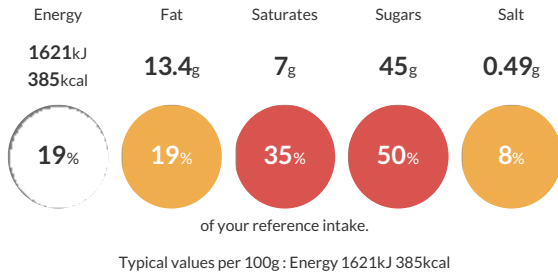
Short Product Name:  
Toffee Cake

A moist toffee sponge filled with a layer of toffee sauce and filled and topped with toffee icing. The cake is finished with a toffee sauce drizzle and a sprinkling of toffee pieces.

Traded Unit GTIN: 5060044070914 Internal GTIN: Supplier: The Handmade Cake Co. Suppliers Product Code: 070914

### Reference Intake

Each 100g portion contains:



### Nutritional Information

Typical Values	Per 100g
Energy	1621kJ 385kCal
Carbohydrates	62.1g
of which sugars	45g
Fat	13.4g
of which saturates	7g
Fibre	0.9g
Protein	3.5g
Salt	0.49g

### Allergy Information

Key: Contains May Contain



### Dietary Information

Key: Suitable for



### Allergen Statement

For allergens, including cereals containing gluten, see ingredients in **BOLD**. This product may contain traces of nuts as it has been made in a bakery that uses nut ingredients.

### Ingredients

**WHEAT** Flour (with Calcium Carbonate, Niacin, Iron, Thiamin), Soft Dark Brown Sugar [Sugar, Cane Molasses], Toffee Sauce (15%) [Glucose Syrup, Invert Sugar Syrup, Sweetened Condensed Skimmed **MILK**, Sugar, Butter Oil (**MILK**)], Water, Colour (Caramel), Stabiliser (Pectin), Natural Flavouring], Sugar, Water, Pasteurised Free Range **EGG**, Salted Butter [Butter (**MILK**)], Salt], Vegetable Margarine [Palm Oil, Rapeseed Oil, Water, Salt, Emulsifier (E471), Natural Flavouring], Skimmed **MILK** Powder, Baking Powder [Raising Agents (E575, E500(ii), E336(i)), Maize Starch], Toffee Pieces (0.8%) [Sugar, Glucose Syrup, Sweetened Condensed Milk (Whole **MILK**), Sugar], Palm Oil, Butter Oil (**MILK**), Natural Flavouring, Coconut Oil, Glazing Agent (Carnauba Wax)], Toffee Flavouring (0.3%).