

Supplier's Product Code :
Product Added :
Last Updated by Supplier :
erudus id :

CCC-NG
24 October 2024
24 October 2024
abeb2e80278844e49327cc46a1054ee6



The information on the Erudus System has been supplied by the manufacturers of the products and, whilst the owners of the Erudus System take steps to ensure the information is regularly updated, they give no warranty and no guarantee that the information is accurate. Product information and ingredients may change, please always read product labels carefully in addition to using the information provided by Erudus One.

We do not accept liability for any inaccuracies or incorrect information contained on this site. Please visit <http://www.erudus.com/terms-and-conditions> for full terms and conditions.

Chilli Con Carne - NG 1.4kg x 2

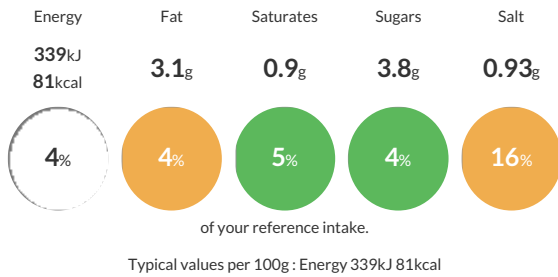
Short Product Name:
Chilli Con Carne

Tender minced beef, fiery jalapeno peppers, sliced red & green capsicum and red kidney beans in a spicy tomato base flavoured with cumin, cayenne pepper and paprika.

Traded Unit GTIN: 5055775104533 Internal GTIN: Supplier: Scheff Foods Ltd Suppliers Product Code: CCC-NG

Reference Intake

Each 100g portion contains:



Nutritional Information

Typical Values	Per 100g
Energy	339kJ 81kCal
Carbohydrates	6.8g
of which sugars	3.8g
Fat	3.1g
of which saturates	0.9g
Fibre	1.8g
Protein	5.5g
Salt	0.93g

Allergy Information

Key: Contains May Contain



Dietary Information

Key: Suitable for



Ingredients

Green Pepper, Red Pepper, Red Kidney Beans (Contains Water, Salt), Tomato, Onion, Cooked Minced Beef (12%), Tomato Puree, Vegetable Gravy Mix (Contains Modified Maize Starch, Cornflour, Salt, Hydrolysed SOYA & Maize Protein, Yeast Extract, Flavouring, Dried Glucose Syrup, Colour E150c, Palm Fat Powder, Sugar), Rapeseed Oil, Jalapeno (Contains Spirit Vinegar, Salt, Spices), Sugar, Salt, Spices, Cornflour.