

Supplier's Product Code :  
Product Added :  
Last Updated by Supplier :  
erudus id :

6551  
01 June 2017  
16 November 2022  
acfd12cd750d4df2a2df92e9718a9165



The information on the Erudus System has been supplied by the manufacturers of the products and, whilst the owners of the Erudus System take steps to ensure the information is regularly updated, they give no warranty and no guarantee that the information is accurate. Product information and ingredients may change, please always read product labels carefully in addition to using the information provided by Erudus One.

We do not accept liability for any inaccuracies or incorrect information contained on this site. Please visit <http://www.erudus.com/terms-and-conditions> for full terms and conditions.

## White Sandwich Bread (Lateral Slice Thick) x5

Short Product Name:

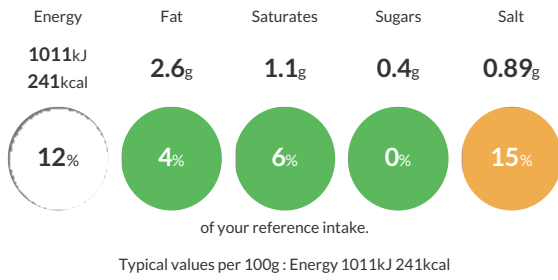
Laterally sliced white bread

A white dough baked in a lidded box tin, sliced horizontally at 12.5mm

Traded Unit GTIN: 5020179065513 Internal GTIN: Supplier: Fosters Bakery (Staincross) Limited Suppliers Product Code: 6551

### Reference Intake

Each 100g portion contains:



### Nutritional Information

Typical Values	Per 100g
Energy	1011kJ 241kCal
Carbohydrates	46.2g
of which sugars	0.4g
Fat	2.6g
of which saturates	1.1g
Fibre	2.5g
Protein	8.1g
Salt	0.89g

### Allergy Information

Key: Contains May Contain



#### Allergen Statement

Manufactured on a site that handles milk, egg, soya  
May contain Milk, Egg, Soya

### Dietary Information

Key: Suitable for



### Ingredients

WHEAT Flour(WHEAT Flour, Calcium Carbonate, Niacin, Iron, Thiamin), Water, Yeast, Palm Oil, Salt, Emulsifiers[Mono and di-glycerides of fatty acids, Mono and di-acetyltartaric acid esters of mono and di-glycerides of fatty acids], Rapeseed Oil, BARLEY Malt Flour, Flour treatment agent[Ascorbic Acid].